

TALBOT

"THE INVINCIBLE"



OFFICIAL CATALOGUE

THE INVINCIBLE

TALBOT

ESTABLISHED 1898

CLEMENT TALBOT LTD.

Manufacturers of Motor Cars, Motor Ambulances,
Special Fast Delivery Vans, &c.

BARLBY ROAD, LADBROKE GROVE

LONDON, W.10

(Works, Sales, Service)

Telephone :
Park 5000

Telegrams :
"Clemtal, Nottarch, London"

THE INVINCIBLE TALBOT

THE Talbot 1933-34 models, as described and illustrated in this catalogue, embody many improvements on those of the 1932-33 season, which were generally acclaimed as the cars of that year. These improvements bring the new Talbots closer to that ideal of perfection which the good motor factory is ever pursuing and never quite attaining.

The factory has devoted much time and thought to improving the comfort and elegance of the Talbot body. The 1933-34 Talbot will set a standard in strength, endurance and elegance which will defy competition not only of cars in the same price class, but of far more costly models.

The Clement Talbot Company records with pride the fact that during the past twelve months it has had approaches from two foreign countries regarding local manufacture of its chassis on licence. It is testimony of the growing world-wide appreciation of the Talbot—the car built on the principle that simplicity is the keynote of engineering efficiency.

CLEMENT TALBOT LTD.

Barlby Road, Ladbroke Grove,
London, W.10.

October, 1933.

Models and Prices

“ SIXTY-FIVE ” MODEL.

				Page
Chassis	£295	5
Standard Saloon	...	£395	...	6
	(Sliding Roof £7 10s. extra.)			
Special 6-Light Saloon	£425	7
Special 4-Light Saloon...	£425	8

“ SEVENTY-FIVE ” MODEL.

Chassis	£395	9
Sports Saloon	...	£495	...	10
	(Sliding Roof £7 10s. extra.)			

“ SEVENTY-FIVE ” MODEL.

(Long Wheelbase.)

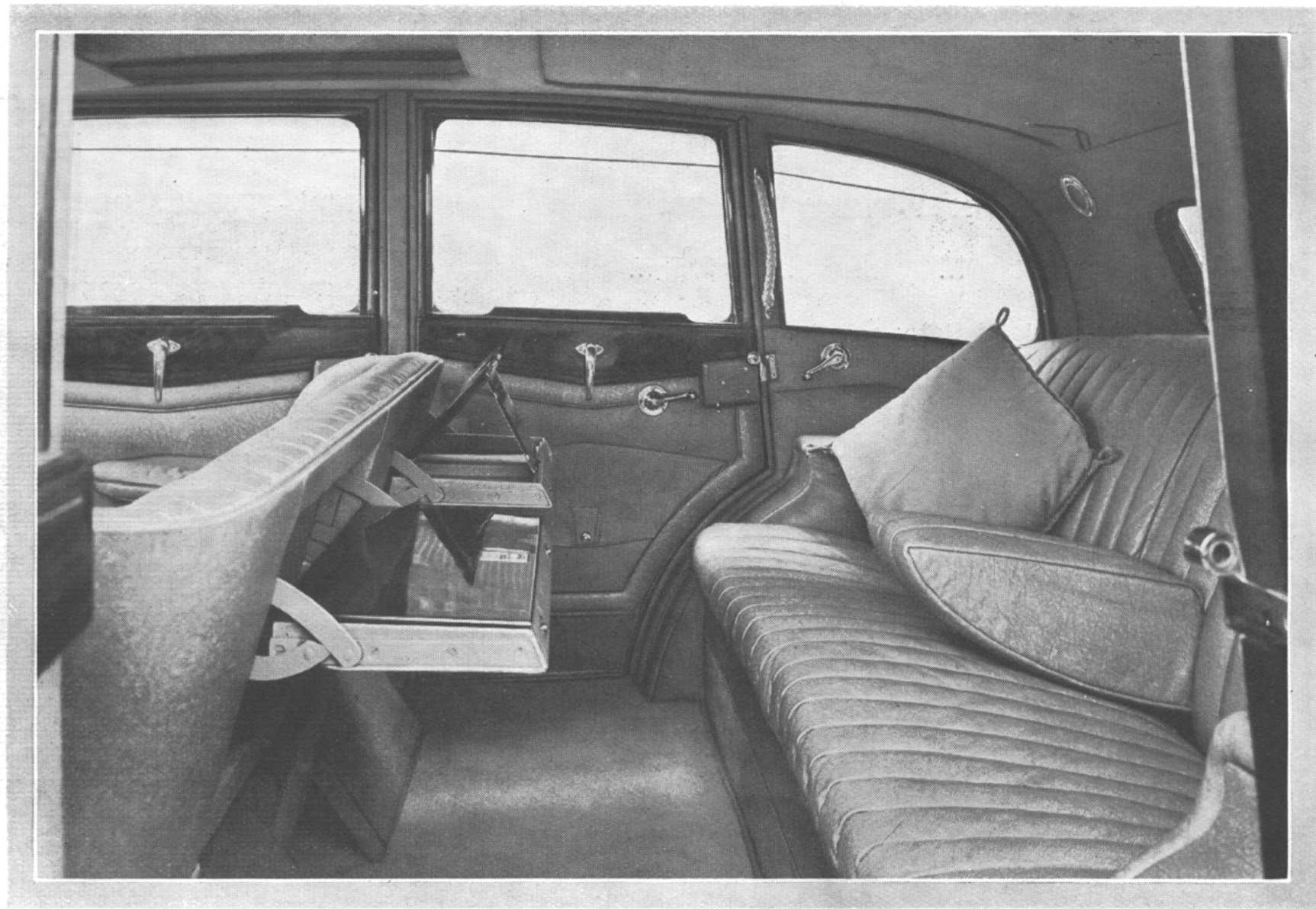
				Page
Chassis	£425	
Coachbuilt Saloon	...	£545	...	11

“ NINETY-FIVE ” MODEL.

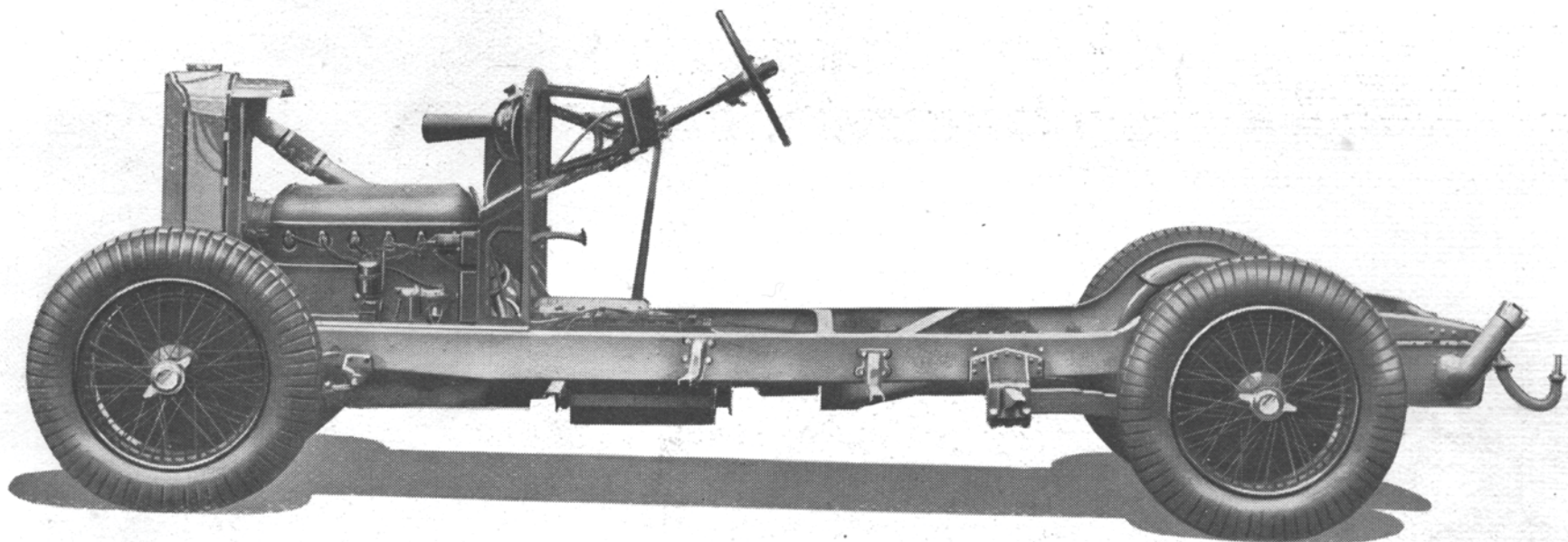
Chassis	£475	12
Coachbuilt Saloon	...	£645	...	13

“ 105 ” SUPER SPEED MODEL.

Chassis	£525	14
4-Door De Luxe Saloon	£795	15



The Comfort and Elegance of Talbot Coachwork



Talbot "Sixty-Five" Chassis

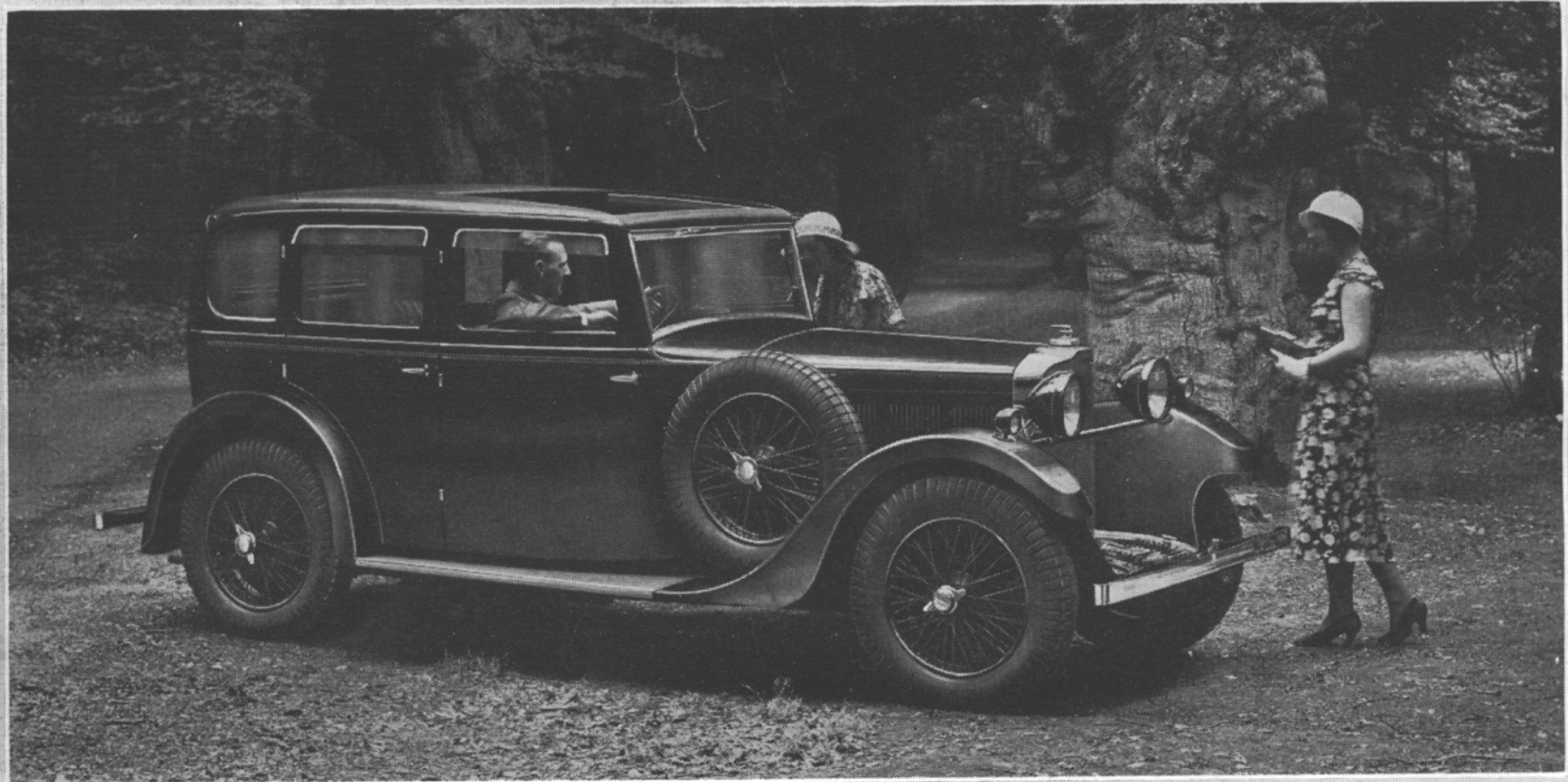
SIX-CYLINDER

Price £295

TAX £14

FOR FULL SPECIFICATION SEE pp. 16-24.

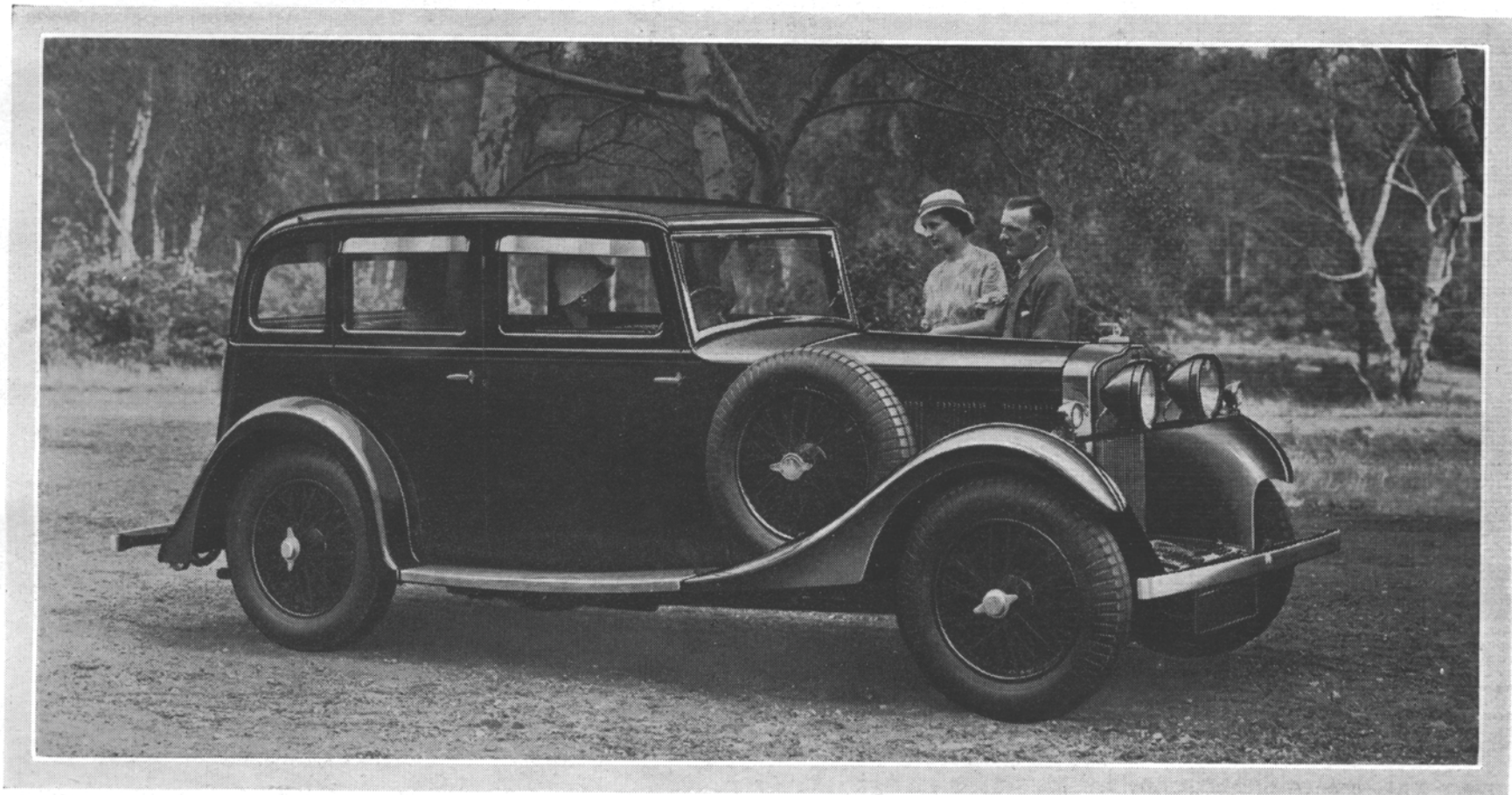
Engine	Bore—61 mm. c.c.—1,666. Stroke—95 mm. R.A.C. Rating—13.8 h.p.	Wheelbase	9' 6"
Tyres	Dunlop "Fort," 29" x 5.5".	Track	4' 8"
Wheels	Detachable wire.	Turning circle	37' 0"
Gear Ratios ...	1st 23.5 to 1 2nd 13.33 to 1 3rd 8.69 to 1 4th (Top) 5.87 to 1 Reverse 32.66 to 1	Overall length (over bumpers)	14' 2"
		Overall width	5' 9"
		Fuel tank capacity	16 galls.
		Bumpers fitted to front and rear.	



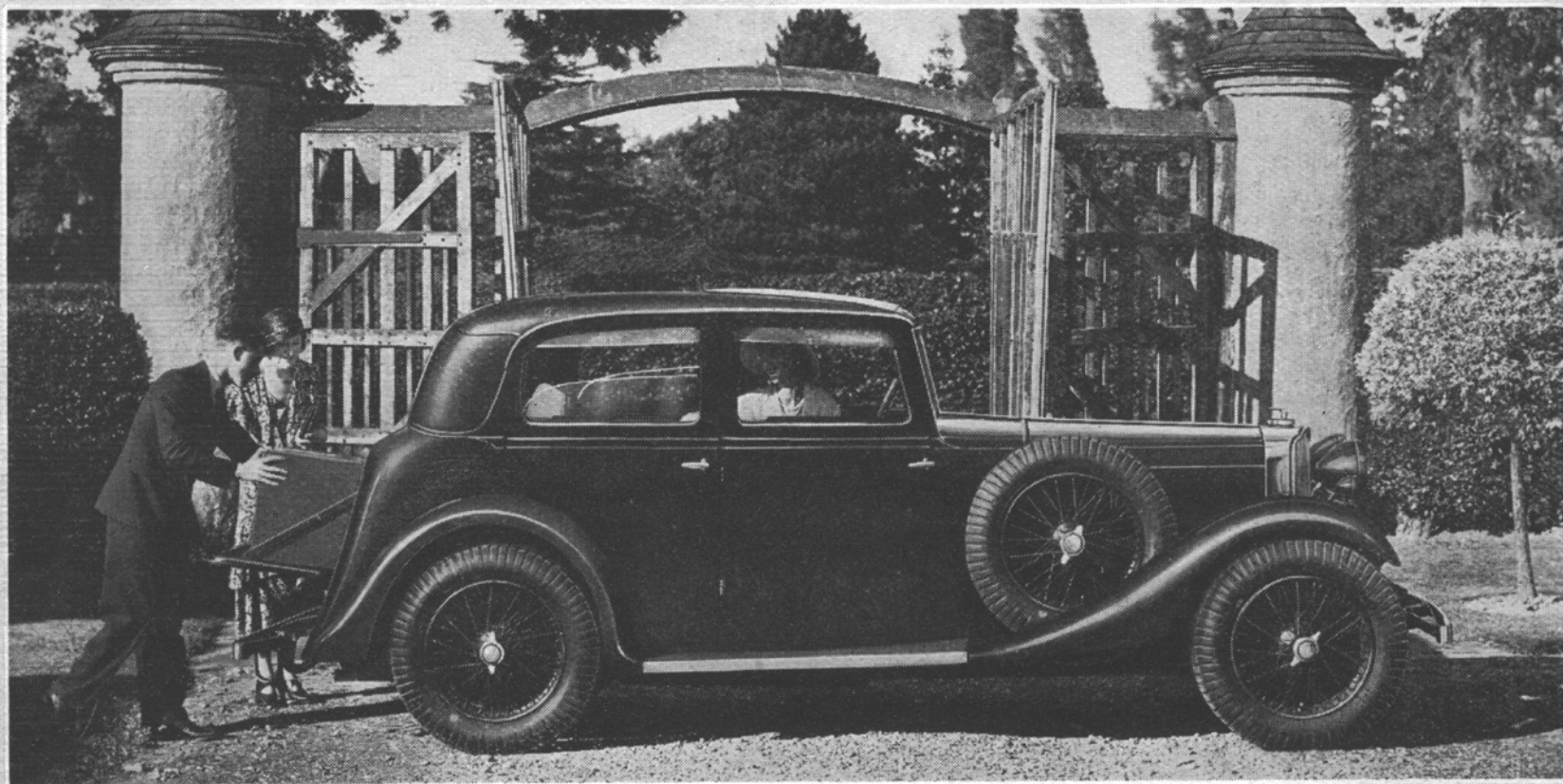
“SIXTY-FIVE” STANDARD SALOON

£395

(Sliding Roof, £7 10s. extra.)



“SIXTY-FIVE” SPECIAL SALOON
£425

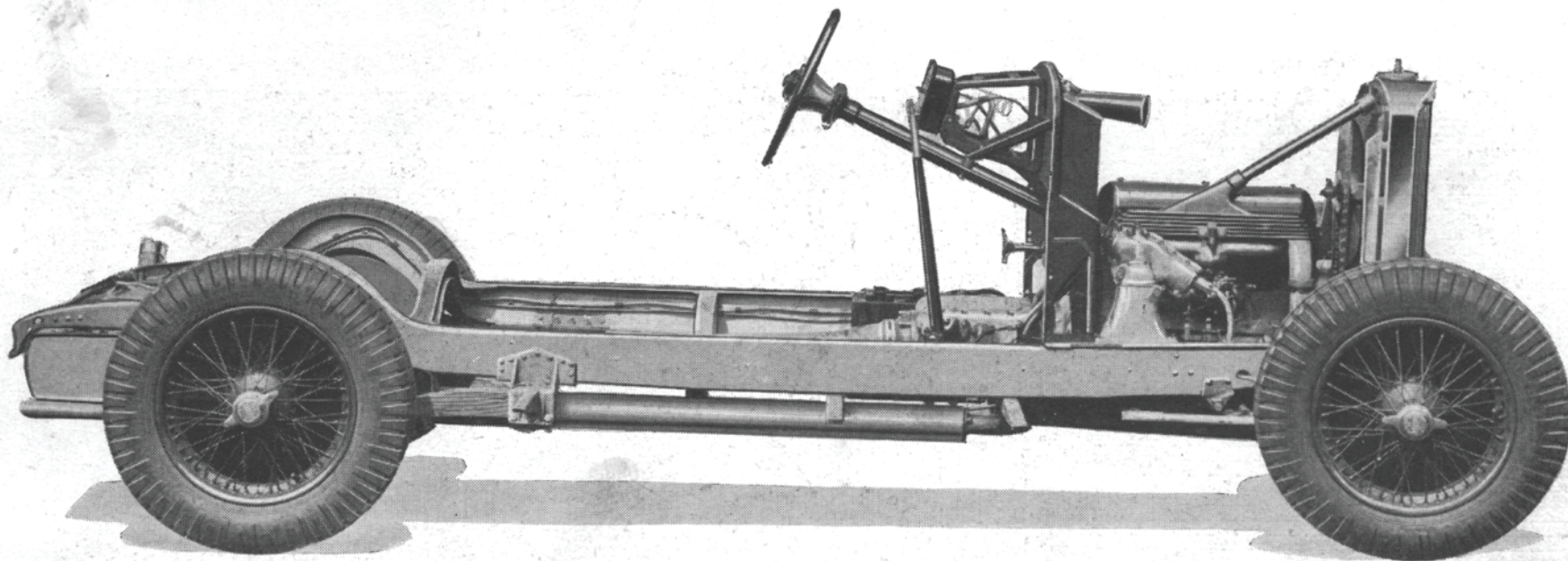


"SIXTY-FIVE" 4-LIGHT SALOON

£425

*Black & Brown
Chromium Plated Bumpers
Double Louve Screen Top*

8 *ordinary synchronous gear box*



Talbot "Seventy-Five" Chassis

SIX-CYLINDER

Price £395 (Long Wheelbase £30 extra)

TAX £18

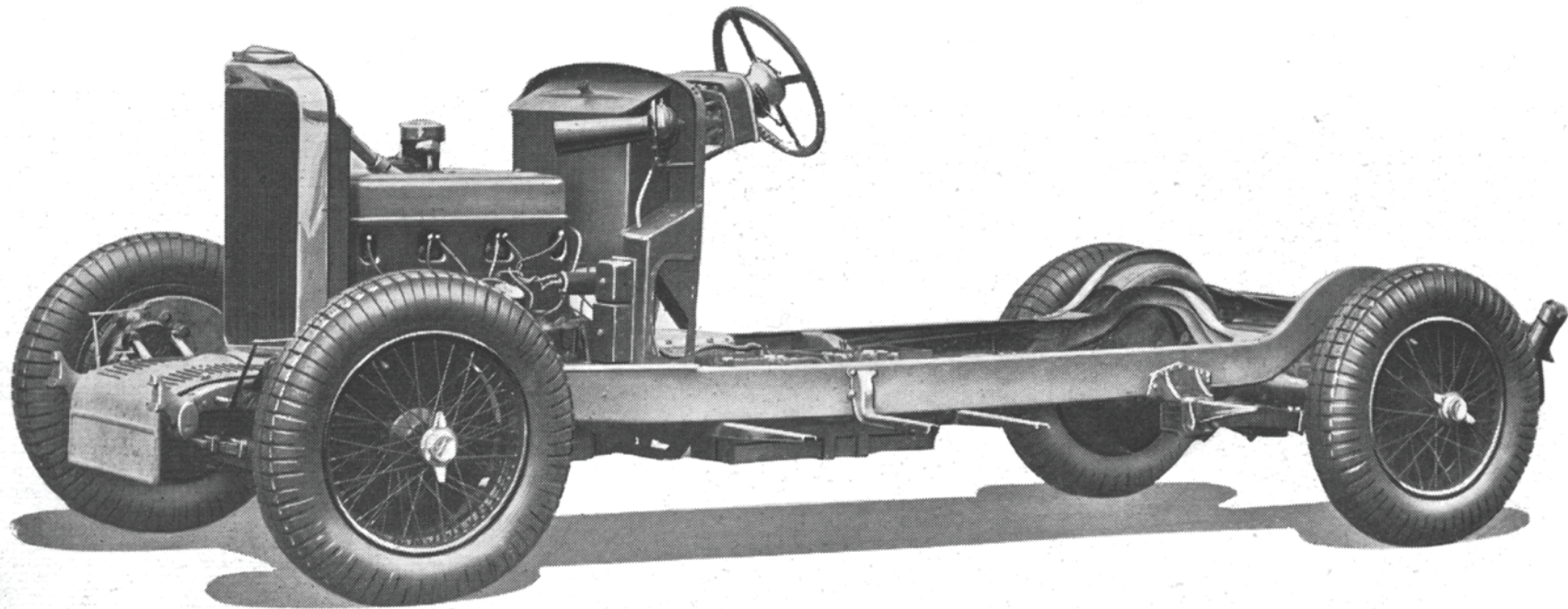
FOR FULL SPECIFICATION SEE pp. 16-24.

Engine Bore—69.5 mm. c.c.—2,276. Stroke—100 mm. R.A.C. Rating—17.9 h.p.	Wheelbase 9' 6"
Tyres Dunlop "Fort," 29" x 5.5".	Track 4' 8"
Wheels Detachable wire (balanced).	Turning circle 37' 0"
Gear Ratios ...	1st ... 19.26 to 1 2nd ... 10.57 to 1 3rd ... 7.15 to 1 4th (Top) ... 5.22 to 1 Reverse ... 25.4 to 1	Overall length (over bumpers) 14' 2"
		Overall width 5' 9"
		Fuel tank capacity 16 galls.
		Bumpers fitted to front and rear.	



"SEVENTY-FIVE" 5-SEATER SALOON
(Long Wheelbase)

£545



Talbot "Ninety-Five" Chassis

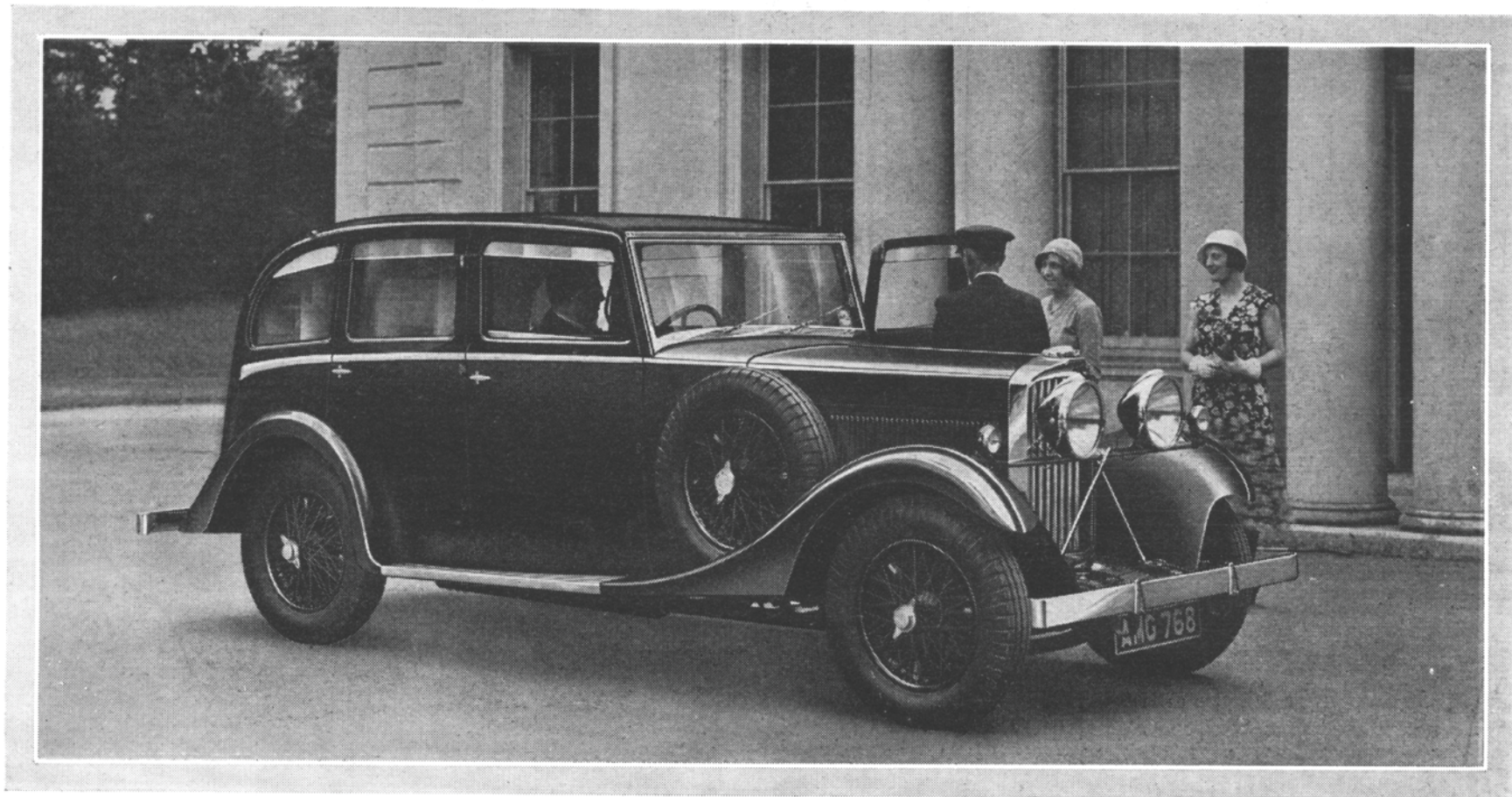
Price £475

TAX £21

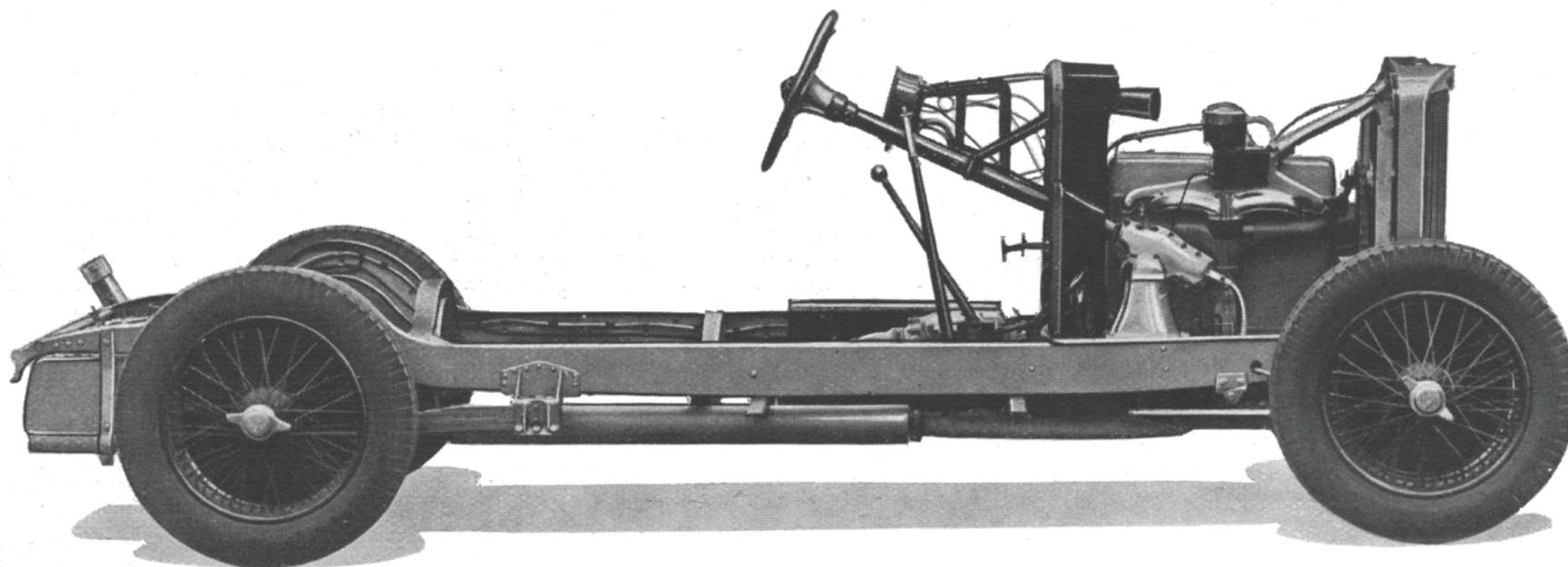
SIX-CYLINDER

FOR FULL SPECIFICATION SEE pp. 16-24.

<p>Engine Bore—75 mm. c.c.—2,969. Stroke—112 mm. R.A.C. Rating—20.9 h.p.</p> <p>Tyres Dunlop "Fort," 30"×6".</p> <p>Wheels Detachable wire (balanced).</p> <p>Gear Ratios 1st 15.64 to 1 2nd 8.69 to 1 3rd 6.25 to 1 4th (Top) 4.6 to 1 Reverse 19.56 to 1</p>	<p>Wheelbase 10' 0"</p> <p>Track 4' 8"</p> <p>Turning circle 39' 10"</p> <p>Overall length 15' 3"</p> <p>Overall width 5' 9"</p> <p>Fuel tank capacity 19½ galls.</p> <p>Bumpers fitted to front and rear.</p>
---	---



"NINETY-FIVE" COACHBUILT SALOON
£645



Talbot "105" Speed Chassis

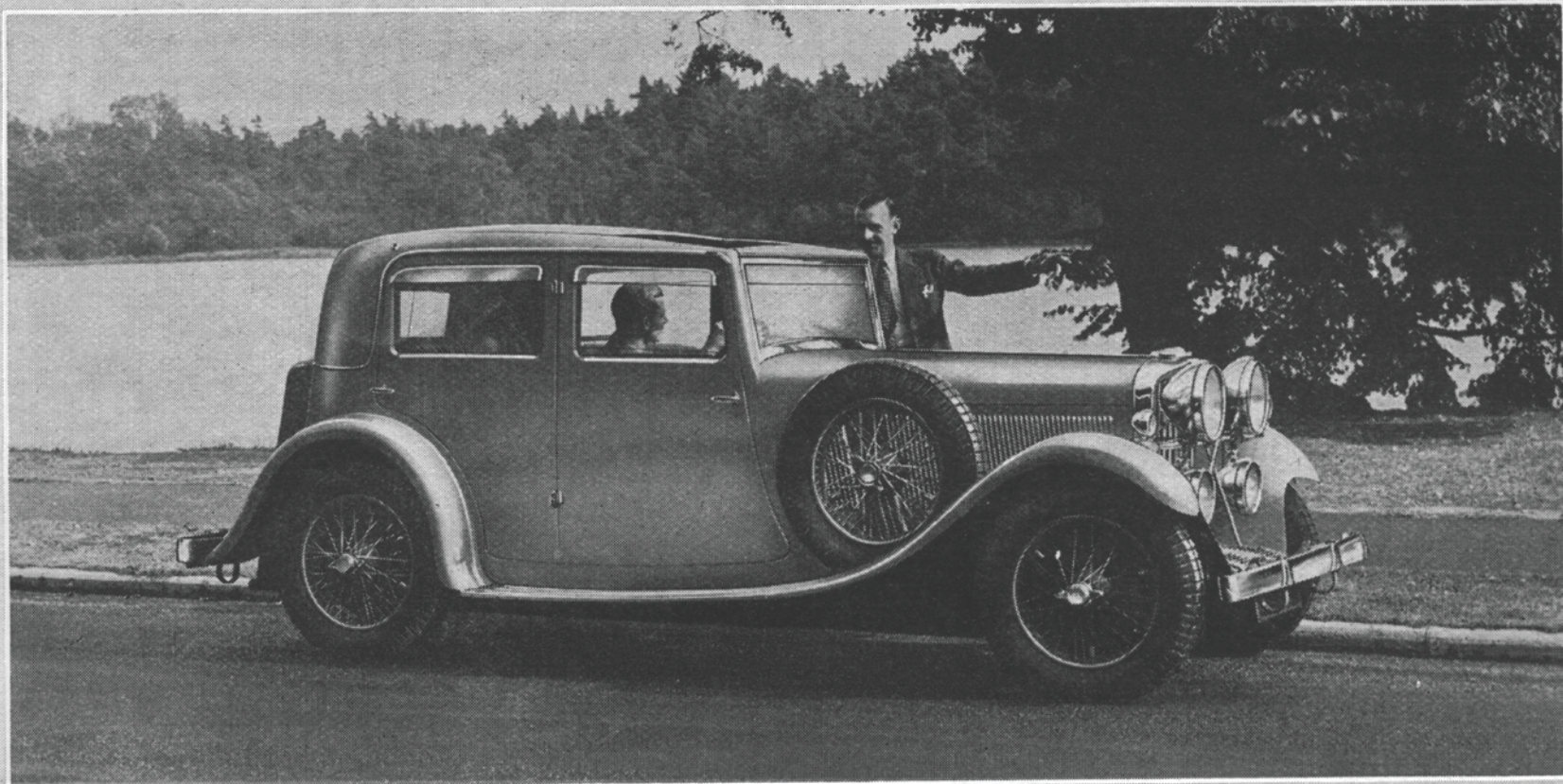
Price £525

TAX £21

SIX-CYLINDER

FOR FULL SPECIFICATION SEE pp. 16-24.

Engine	Bore—75 mm. c.c.—2,969. Stroke—112 mm. R.A.C. Rating—20.9 h.p.	Wheelbase	9' 6"
Tyres	Dunlop "Fort" 29" x 5.5".	Track	4' 8"
Wheels	Detachable wire (balanced).	Turning circle	37' 0"
Gear Ratios	1st ... 13.6 to 1 or 14.83 to 1 2nd ... 7.56 to 1 or 8.24 to 1 3rd ... 5.44 to 1 or 5.93 to 1 4th (Top) 4.0 to 1 or 4.36 to 1 Reverse 17.0 to 1 or 18.55 to 1	Overall length	14' 2"
			Overall width	5' 9"
			Fuel tank capacity	19½ galls.
			Bumpers fitted to front and rear.				



"105" SPORTS 4-DOOR SALOON
£795

Special Features and General Specifications

THE TALBOT—appealing to the critical motorist who wants the best value in a moderately priced car—calls attention to the following general specifications and special features of the “65,” the “75,” the “95” and the “105” models. The quality of these models is *unsurpassed in every detail*, e.g., *Fort Dunlop* tyres are fitted on all models. Batteries are of very great capacity and the electrical wiring is *armoured* throughout and special to our design. Many other original features will interest the experienced motorist.

Complete *automatic lubrication* to the chassis and springs gives freedom from inconvenience to the owner.

ENGINE.—Six-cylinder monobloc casting, forming with the gearbox a single unit. The gearbox can be separately detached. The bottom of crank chamber is detachable without interfering with the gearbox.

MODEL “65”

Bore—61 mm.	c.c.—1,666
Stroke—95 mm.	R.A.C. Rating—13.8 h.p.

MODEL “75”

Bore—69.5 mm.	c.c.—2,276
Stroke—100 mm.	R.A.C. Rating—17.9 h.p.

MODELS “95” and “105”

Bore—75 mm.	c.c.—2,969
Stroke—112 mm.	R.A.C. Rating—20.9 h.p.

Power of all engines has been increased, with improved timing gears, camshaft and dynamotor drive. All engines have new large oil radiator cooling sump. The top half crankcase and cylinder block, of special chromidium cast iron, form one casting; the detachable cylinder head is of similar material.

Special Features and General Specifications

VALVE GEAR.—Overhead push-rod-operated valve gear is fitted. On the “65” and “75” the valves are in line, and are staggered on the “95” and “105” models. All valve gear is of a specially balanced design fitted with extremely simple means of adjustment. An oil-tight cover encloses the whole gear and forms a chamber which is in direct communication with the crankcase, thus allowing the valve gear to work in an oil vapour. The rocker gear is lubricated under pressure from the main oil system. The new type camshaft also operates the petrol pump which can now be primed by hand.

THE CRANKSHAFT is of exceptionally liberal dimensions of the disc-web type, and machined all over. Carried on four bearings and balanced on the “65,” and seven bearings and counterbalanced on “75,” “95” and “105” models, both types are attached to the upper half of the crankcase. Lubrication is effected by a gear pump driven from the crankshaft, forcing oil through it to each journal and big-end bearing and all other rotary bearings.

PISTONS AND CONNECTING ROD.—The pistons are of a very sturdy design, though light in weight. They are made with a high tensile aluminium alloy crown and a cast-iron skirt, ensuring long life. Connecting rods are of the lightest section consistent with strength; the bearings are of white metal integral with the rod; the main bearings are die-cast white metal, fixed in suitable bearings.

LUBRICATION, OIL FILLER AND FILTER.—An exceptionally accessible combined oil filler, filter and breather is embodied on the off-top-side of the crankcase on the “65” and “75”; on the “95” and “105” the breathing is taken through the carburettor inlet. The filter can be easily withdrawn for cleaning; it is placed on the pressure side of the pump, an important point for oil-cleansing. Another small filter is in the bottom crankcase on the suction side of the pump; when the oil pressure drops below a safe minimum a warning light appears on the instrument board. The handle for the chassis lubrication pump, which is automatically filled when replenishing the engine, is located alongside the oil filler.

CARBURATION.—The induction system is of the hot-spot type, the induction pipe being in contact with the exhaust pipe at one point, giving very good carburation with maximum economy and quick starting from cold. A Zenith Pump Type Down Draught Carburettor is fitted to the “95” and “105”; Zenith Vertical Pump Type to the “75”; and Zenith Horizontal to the “65.”

Special Features and General Specifications

COOLING.—Cooling is effected by a large “V” shaped honeycomb radiator of ample capacity, the system being thermo-syphon on the “65.” On the “75,” “95” and “105” *thermostatically operated shutters* working on *stainless steel pivots* (chromium-plated finish) are fitted to the radiator. A gear-driven water pump has its bearings lubricated by oil pressure inside the engine.

The pump spindle, provided with a really adaptable gland, is used to prevent any leak. By this method the water pump spindle, which is *nitrided and stainless*, cannot wear or become slack. All radiators are mounted on the engine feet and form an *integral part of the power unit*, thus eliminating all strains usually received from the chassis.

A *special quick-acting filler cap* is fitted to the “95” and “105,” and a large diameter round cap to the “65” and “75.”

The radiator temperature gauge for the “105” is mounted in the instrument board, and on the “65,” “75” and “95” it is contained in the Radiator Mascot. A *large drain tap* is fitted under the radiator foot to empty at one operation the whole of the water contained in the system. A point of special interest is that the bottom water pipe and its rubber pipe connection are eliminated. A *large and efficient radiator fan*, designed on the lines of an aeroplane propeller, is fitted to the “75,” “95” and “105.”

GEARBOX.—Two types are available, the Self-Changing Accelerating Gearbox and the Silent Third Gearbox with clutch. Both are of unit construction and can be detached without interfering with any part of the engine. They have four forward speeds and reverse. Ball and roller bearings are fitted and both types of boxes are automatically lubricated from the engine, while the universal joint is automatically lubricated from the gearbox.

THE SELF-CHANGING ACCELERATING GEARBOX is of a new Talbot design (Wilson patents) and will give an equal appeal to the lady driver or the enthusiastic racing motorist. It is silent on all gears. The box is a sturdy one-piece casing bolted to the engine; the whole of the mechanism is fitted in the box from the top, which is accessible when the single cover is removed.

The lubrication of all bearing and gears in the box is a Talbot feature and is effected *under pressure* centrally from the engine. It cannot fail, for in addition the box is fitted with

Special Features and General Specifications

JUNCTION BOX AND DIRECTION INDICATORS.—An accessible junction box also containing the cut-out is placed on the near side of the dash underneath the bonnet, thus simplifying and reducing the length of the wiring. On the "75," "95" and "105" front indicator arrows are fitted in the bottom of the radiator casting, and a rear indicator consisting of direction arrows, stop light, dual rear lights (in case one bulb fails), reverse light and rear number plate. On the "75" and "65" models a rear indicator is fitted consisting of direction arrows, stop light, rear light and number plate. All the indicator arrows are controlled from the steering, and on all models the tell-tale lights show up on the instrument board. On the "65" a switch on the steering wheel operates a dimming device which switches off the near-side head lamp and leaves on the off-side one (which is slightly inclined to the left) for illumination purposes. On the "75," "95" and "105" both head lamps are controlled in a similar manner. This system of lighting has the effect of giving a clear view of the near side of the road and does not cause any inconvenience to oncoming traffic.

The above specifications, in the carrying out of which the most scrupulous care has been taken in every detail, will convince the discriminating motorist that his Talbot will give pride of possession, complete freedom from care, and genuine delight in driving. **Upkeep has been reduced to merely filling with petrol, oil, and, occasionally, water. All lubrication is automatic.**

Only the best quality material is used. All the stressed internal parts are made of the finest steel obtainable, and all structural assembly fitted with a large proportion of alloy steel bolts and split pin nuts.

RADIO.—Aerials for Radio Installation can be fitted without extra charge by request.

EXPORT

Where cars are required for use overseas we supply models embodying certain special modifications to suit the conditions under which cars are used. Full particulars will be supplied by our Export Department. We recommend clients who intend taking their cars abroad to acquaint us of this fact at the time of placing their orders.

Coachwork Specifications

" SIXTY-FIVE " STANDARD SALOON.—Seating five persons with perfect comfort, adjustable front seat ; four doors ; generously fitted with travel amenities. Standard colours : black with cream, red, green or blue panel and wheels ; also blue and dark green. Upholstery : furniture hide, brown, blue, red or green.

" SIXTY-FIVE " SPECIAL 6-LIGHT SALOON.—An impressive roomy body ; four large doors ; centre arm-rest to rear seat ; exterior body fittings chromium-plated ; louvres over each door ; head cushions and rope pulls ; sliding roof ; interior light ; provision for luggage in rear boot. Standard colours : black with cream, red, green or blue panel and wheels, Royal blue, Avalon blue, maroon, dark green. Upholstery : furniture hide, brown, blue, red or green.

" SIXTY-FIVE " SPECIAL 4-LIGHT SALOON.—An attractive close-coupled saloon ; four large doors ; centre arm-rest to rear seat ; single-piece split front seat adjustable for position ; provision for luggage in rear boot ; boot door specially constructed to form luggage platform. Standard colours : black with cream, red, green or blue panel and wheels, Royal blue, Avalon blue, maroon, dark green. Upholstery : furniture hide, brown, blue, red or green.

" SEVENTY-FIVE " SPORTS SALOON.—A comfortable and roomy saloon to seat four or five with four large doors ; adjustable bucket seats in front ; boot at rear for luggage, fitted with suitcase. Generously fitted with travel amenities. Standard colours : maroon, black, blue, dark green. Upholstery : furniture hide, brown, blue, red or green.

" SEVENTY-FIVE " (LONG WHEELBASE) COACHBUILT SALOON.—An impressive saloon car to seat five, remarkably roomy and comfortable ; table and foot-rests in front of rear seats ; bumper bars of special design front and rear ; sliding roof. Generously fitted with travel amenities. Standard colours : black with cream, red, green or blue panel and wheels, Royal blue, dark green or maroon. Upholstery : furniture hide, brown, blue, red or green.

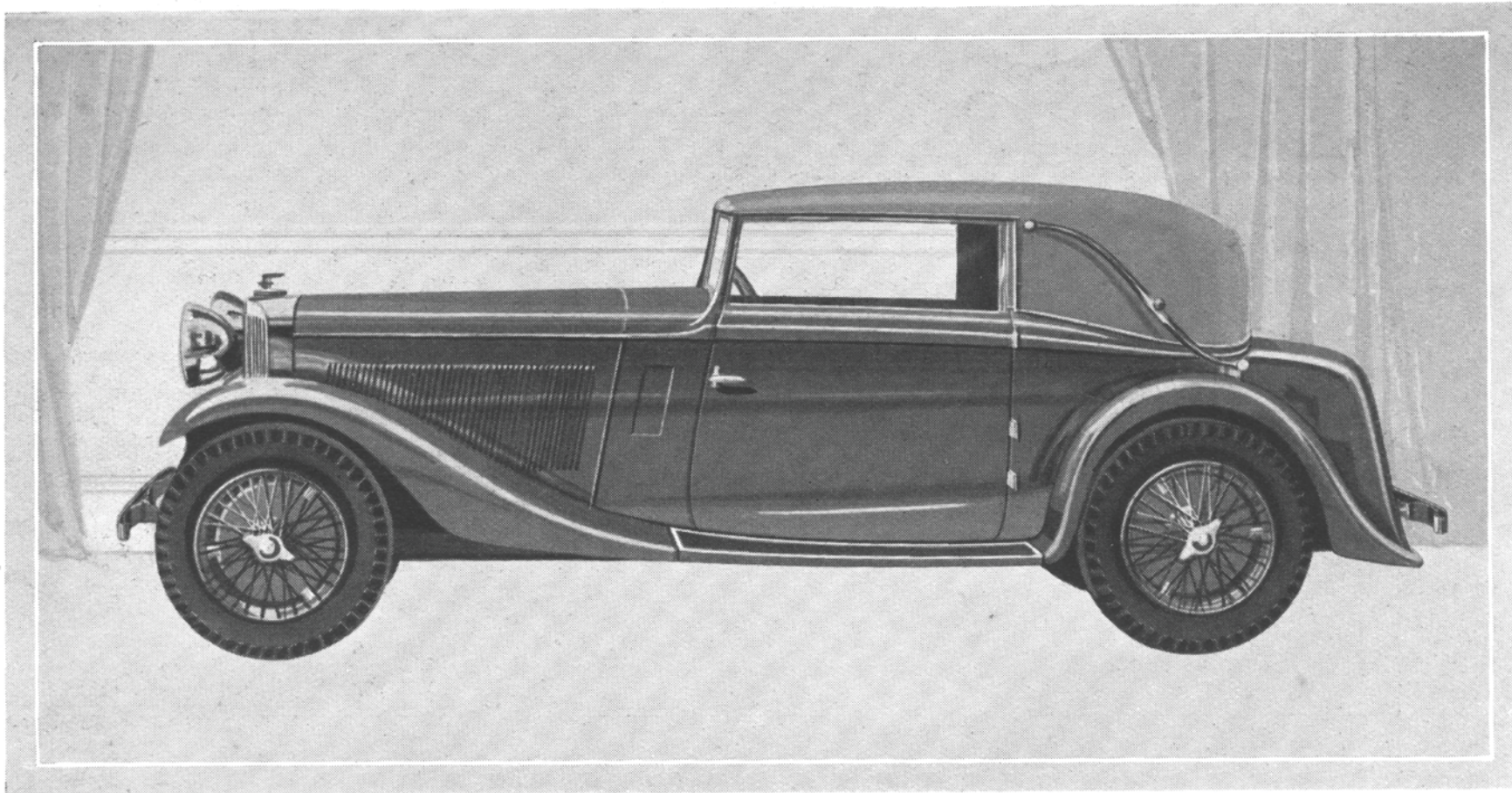
" NINETY-FIVE " COACHBUILT SALOON.—A luxurious, roomy saloon, admirably suited for city and touring use ; good provision for luggage ; two interior lights ; head cushions ; interior sun visors ; bumper bars of special design front and rear ; sliding roof. Perfectly fitted with travel amenities. Safety glass throughout. Standard colours : black, Royal blue, dark green or maroon. Upholstery : brown, blue, red or green hide.

" 105 " SPORTS DE-LUXE 4-DOOR SALOON.—A luxurious sports saloon, admirably suited for fast and long-distance touring ; good provision for luggage ; two interior lights ; head cushions ; interior sun visors ; bumper bars of special design front and rear ; sliding roof. Perfectly fitted with travel amenities. Safety glass throughout. Colours to choice. Upholstery : brown, blue, red or green hide.



*Special Coachwork
for Talbot
Cars*





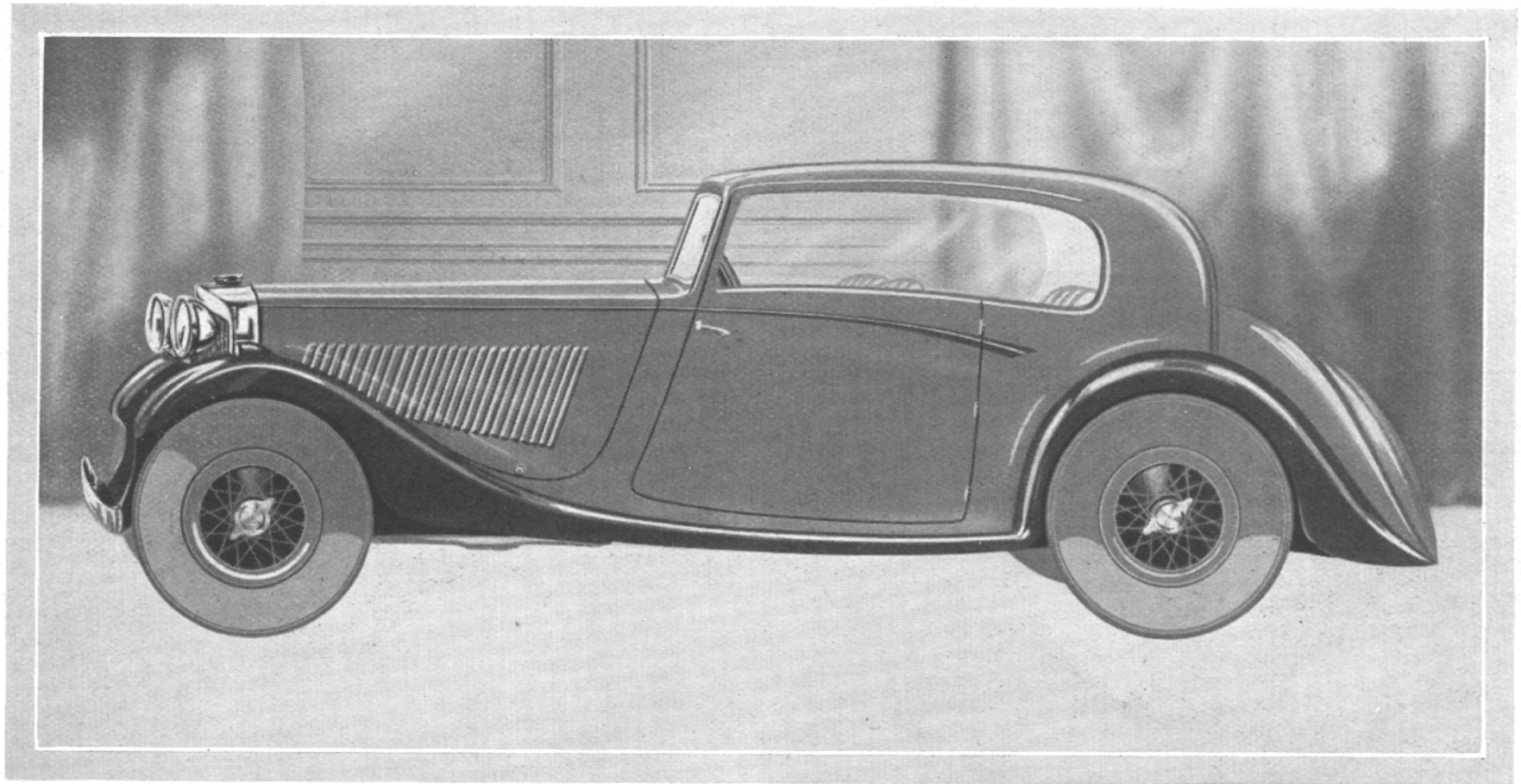
Model "65"
Drop-head Foursome Coupé

by

THE CARLTON CARRIAGE CO., LTD.

A STRIKING SUPPLEMENT TO THE STANDARD TALBOT RANGE, AT VERY SMALL EXTRA COST. THIS CAR WILL ATTRACT THOSE REQUIRING A COMPACT MODEL (WITH COMFORTABLE SEATING FOR FOUR PERSONS INSIDE THE HOOD) WHICH CAN BE OPENED ENTIRELY WHEN DESIRED. THE EASE WITH WHICH IT CAN BE CONVERTED FROM A CLOSED TO AN OPEN MODEL, AND VICE VERSA, IS A GREAT FEATURE, ENABLING FULL ADVANTAGE TO BE TAKEN OF EXISTING WEATHER CONDITIONS.

Price £495



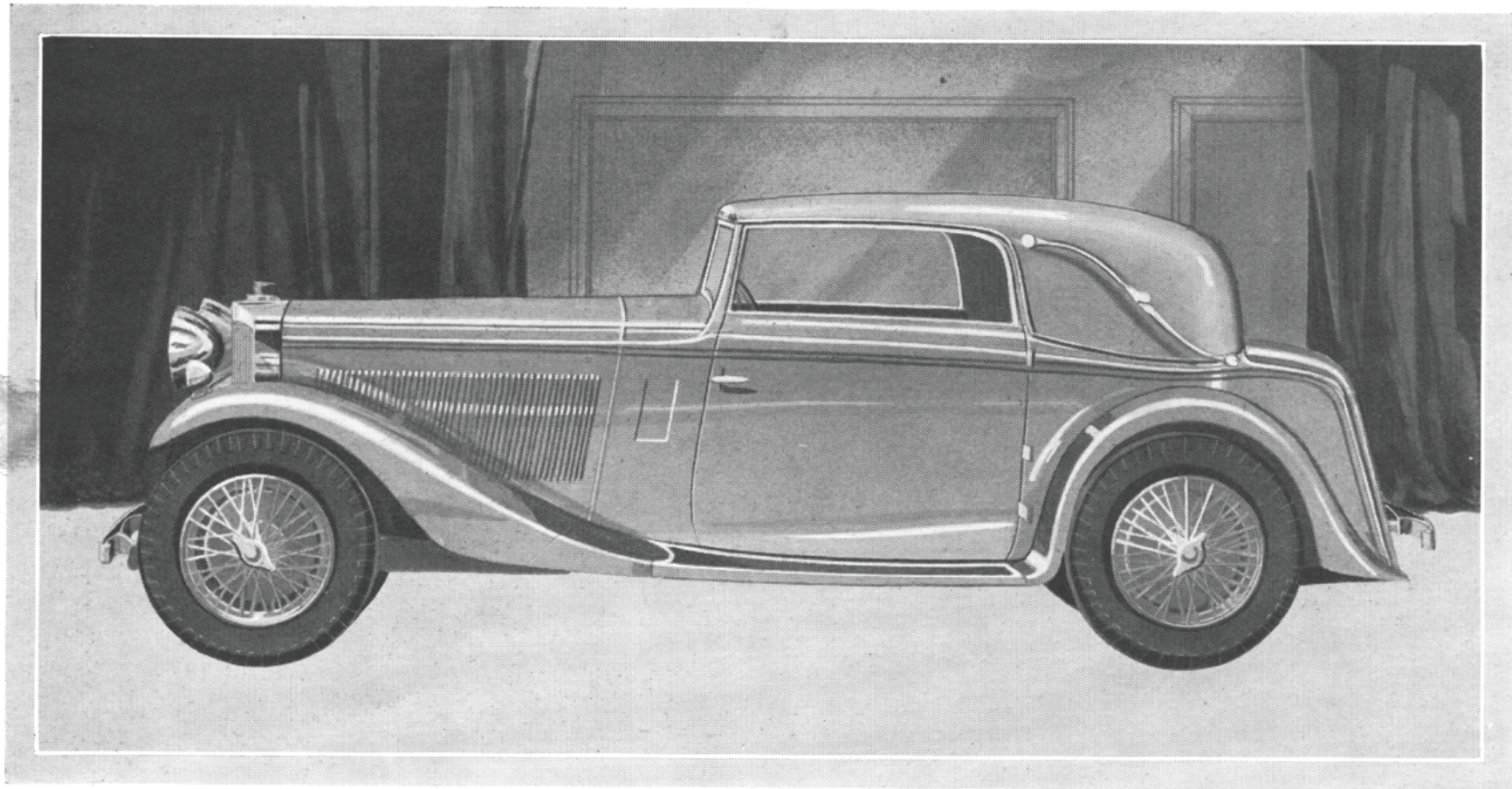
Model "65"
Special "Open-Air" Coupé

by

THE R.E.A.L. CARRIAGE WORKS, LTD.

A SPLENDID EXAMPLE OF A SPECIAL SPORTS COUPÉ ON THE "65" TALBOT CHASSIS, FITTED WITH PATENT SLIDING WINDOW, SECURING EXCELLENT VISION AND VENTILATION FOR ALL PASSENGERS. TWO WIDE DOORS PROVIDE THE EASIEST POSSIBLE ACCESS TO THE FRONT SEATS, AND THE GRACEFUL CURVES OF THE COACHWORK WILL AT ONCE BE APPARENT TO THE CONNOISSEUR.

Price £495



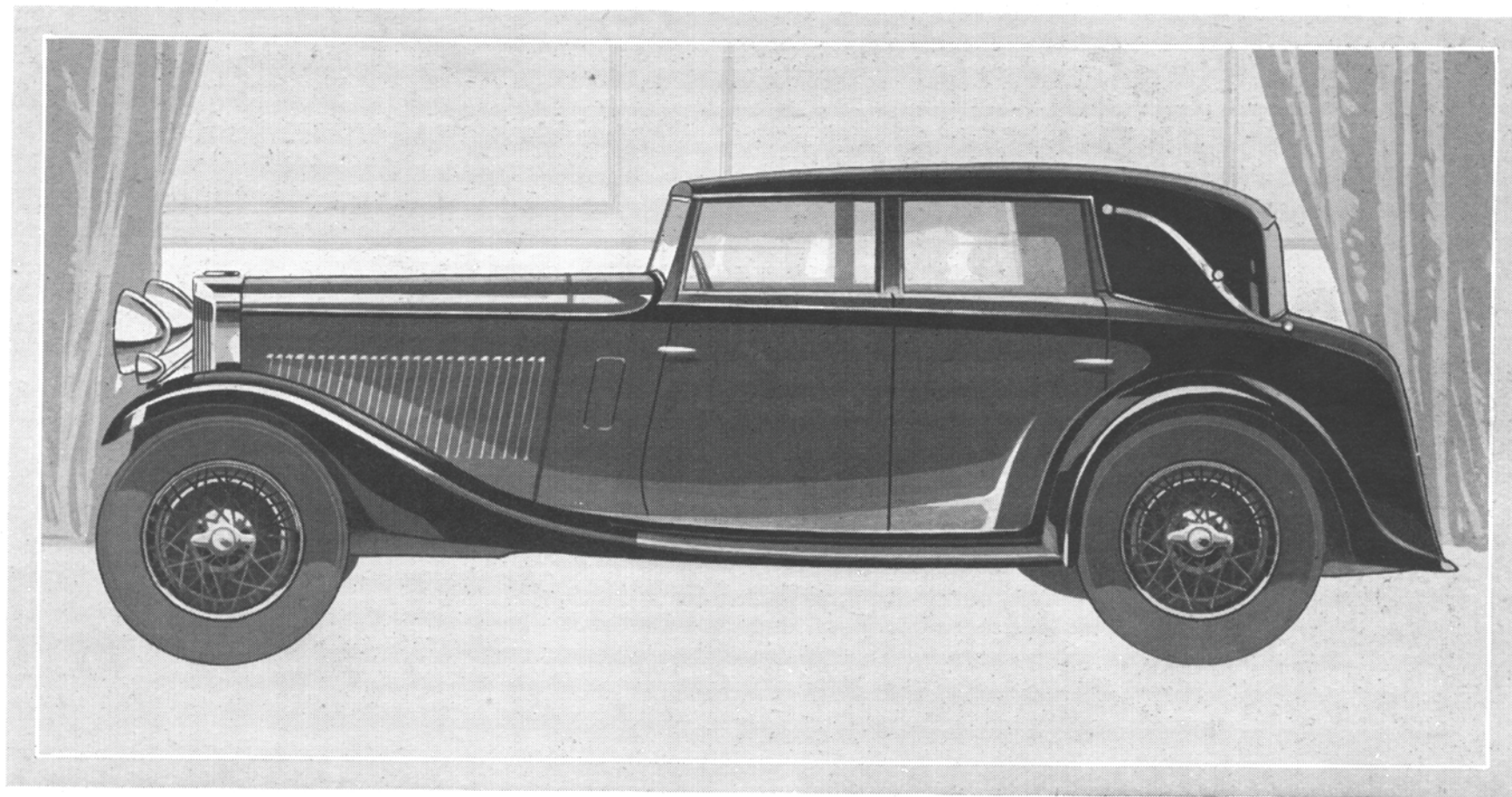
Model "75"
Fixed-head Foursome Coupé

by

THE CARLTON CARRIAGE CO., LTD.

A MODEL ON SPORTS LINES WHICH SUPPLEMENTS THE LONG AND SHORT SALOONS MOUNTED AS STANDARD ON THE "75" CHASSIS, AND ADEQUATELY MEETS THE NEEDS OF THOSE REQUIRING A FAST COMPACT CAR FOR EXTENDED TOURING.

Price, complete with
Sliding Roof - - £645



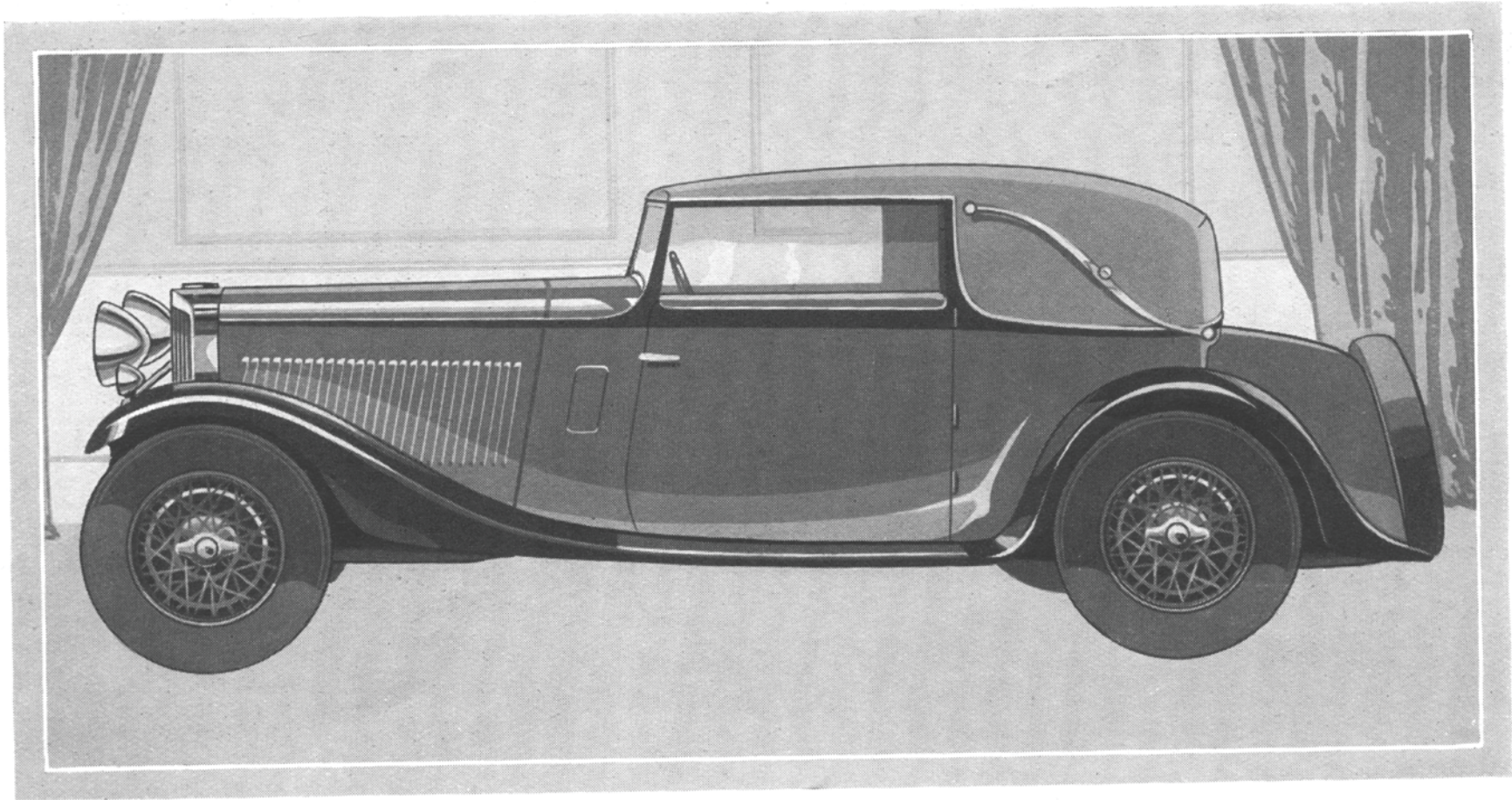
Model "95"
"Antibes" Convertible Saloon

by

OFFORD & SONS, LTD.

A MOST USEFUL TYPE OF BODY WITH FOUR DOORS, CONVERTIBLE AT WILL FROM A COMPLETELY ENCLOSED SALOON TO AN ENTIRELY OPEN CAR. IF DESIRED, THE SIDE WINDOWS REMAIN UP WITH THE HOOD DOWN, GIVING EXCELLENT PROTECTION, AND THE HOOD LOWERS EASILY AND QUICKLY.

Price £845



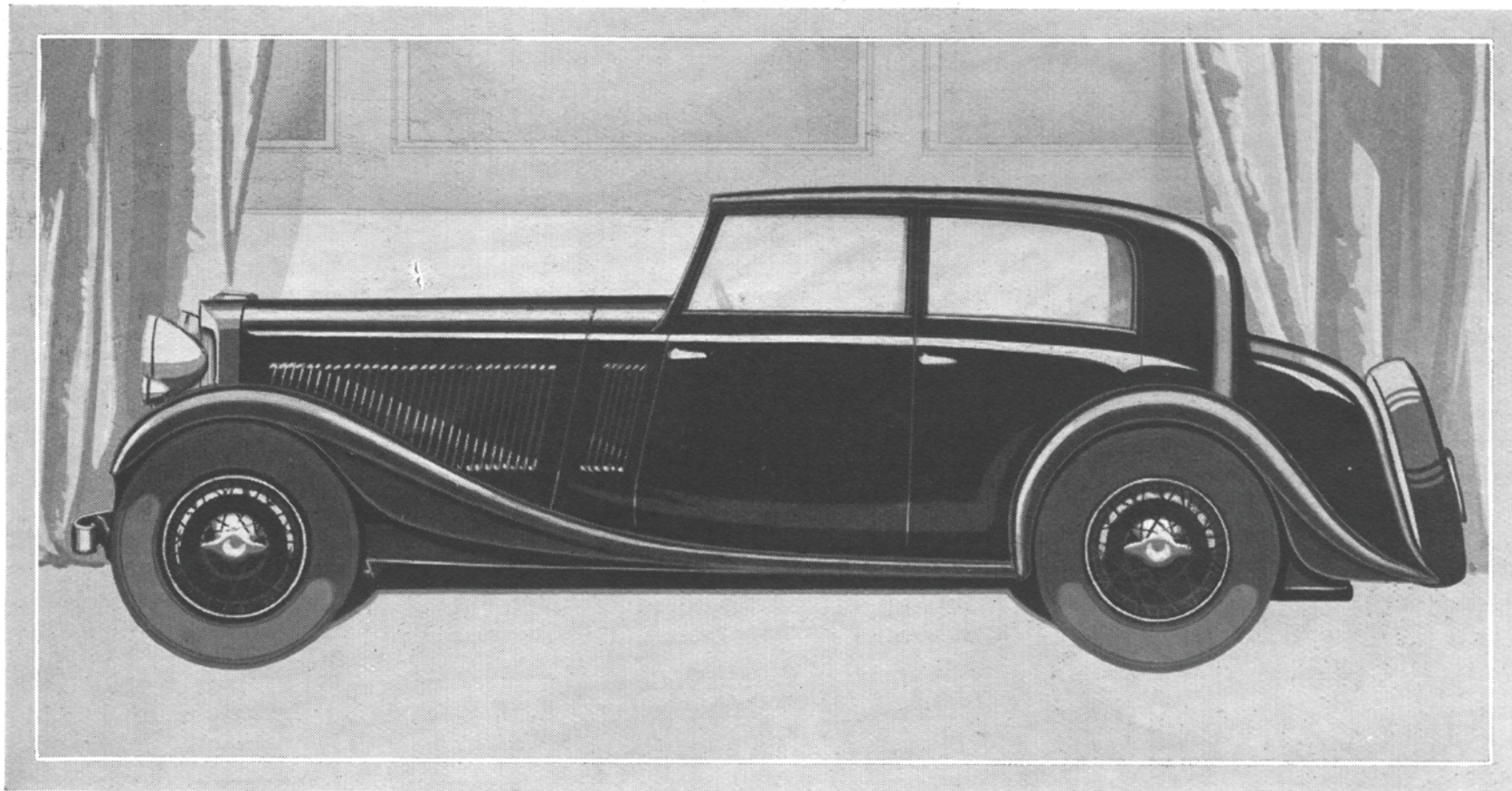
Model "95"
Drop-head "Brioni" Coupé

by

OFFORD & SONS, LTD.

A MOST ELEGANT DROP-HEAD MODEL, SEATING FOUR PERSONS INSIDE THE HOOD. WHICH, WHEN OPEN, LIES PARTICULARLY SNUG AND FLAT. WITH A 6-IN. LONGER WHEELBASE THAN THE "105," THIS CAR GIVES GENEROUS ROOM FOR FIVE PASSENGERS, AND AMPLE LUGGAGE SPACE.

Price £765



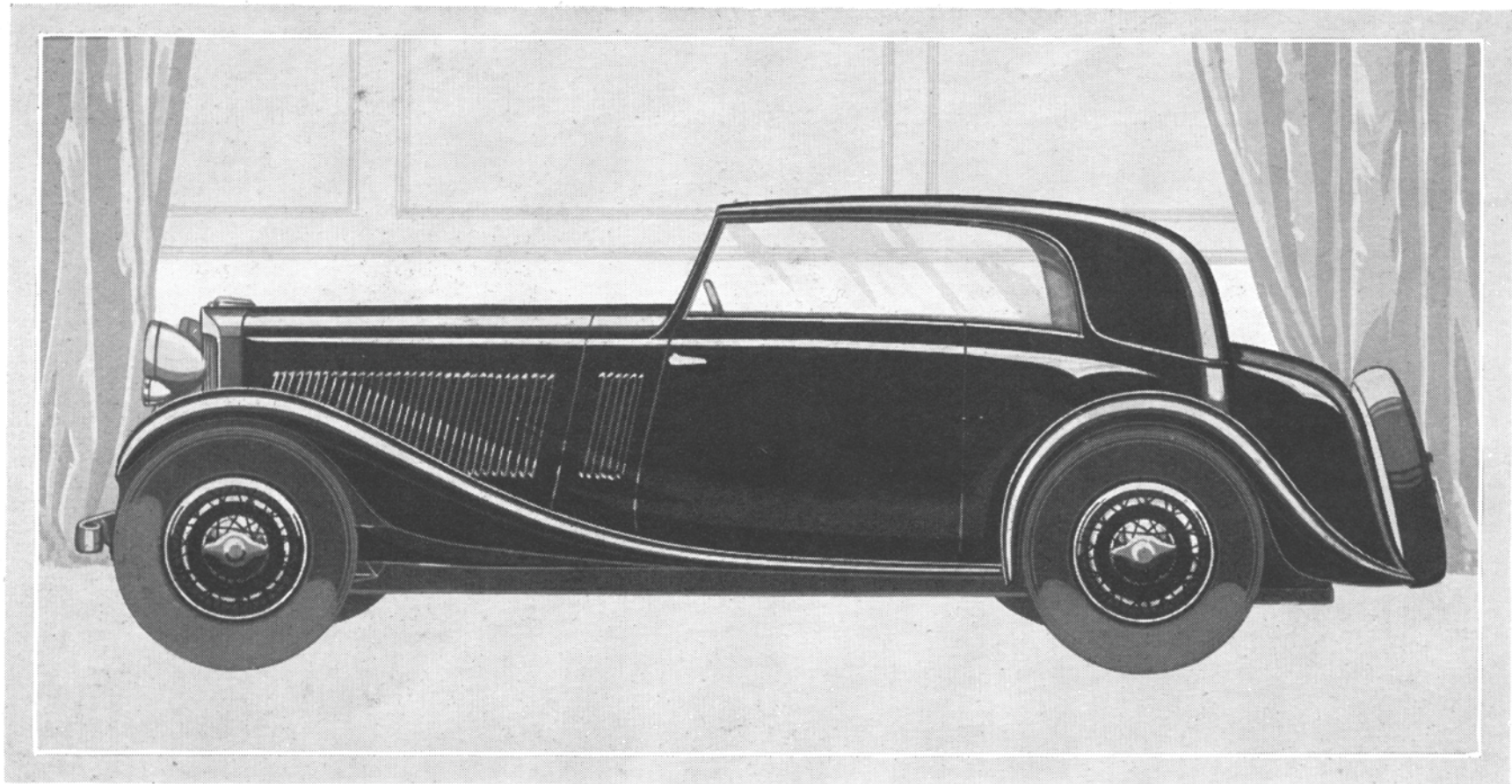
Model "105" 4-door Saloon

by

JAMES YOUNG & CO., LTD.,
BROMLEY

A CAR IN WHICH GRACE OF LINE AND INTERIOR COMFORT HAVE BEEN MOST SKILFULLY COMBINED. THE COACHWORK INCORPORATES ALL MODERN IDEAS, AND THE CHROMIUM-PLATED MOULDING GIVES A FINAL TOUCH OF DISTINCTION. FOUR WIDE DOORS MAKE INGRESS AND EGRESS PARTICULARLY EASY.

Price £795
Sliding Roof £10



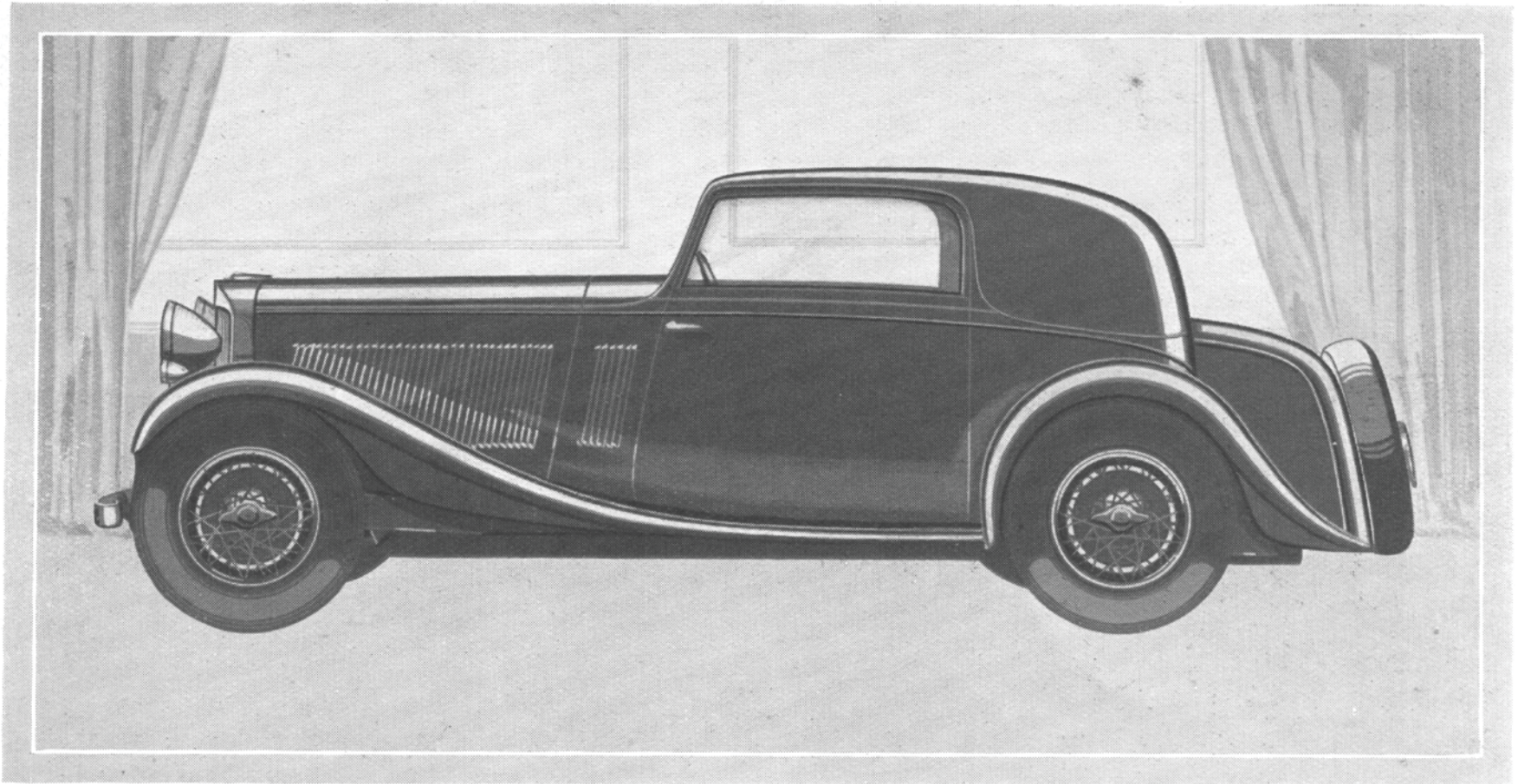
Model "105"
Sports Foursome

by

JAMES YOUNG & CO., LTD.,
BROMLEY

ONE OF THE MOST STRIKING EXAMPLES OF COACHWORK YET PRODUCED, THIS FOUR-SEATER SALOON COUPÉ WITH SLIDING ROOF HAS A UNIQUE PATENTED FEATURE IN THE FORM OF A QUARTER WINDOW WHICH SLIDES BACK OUT OF SIGHT. WITH THE DOOR WINDOW DOWN, THE CAR VIRTUALLY BECOMES AN "ALL OPEN" BODY, AND MOTORISTS WILL APPRECIATE THE UNRESTRICTED VISION AFFORDED, WITH SHADE OR SUN ACCURATELY CONTROLLED BY THE SLIDING ROOF.

Price £795
Sliding Roof £10



Model "105"
Fixed-head Foursome Coupé

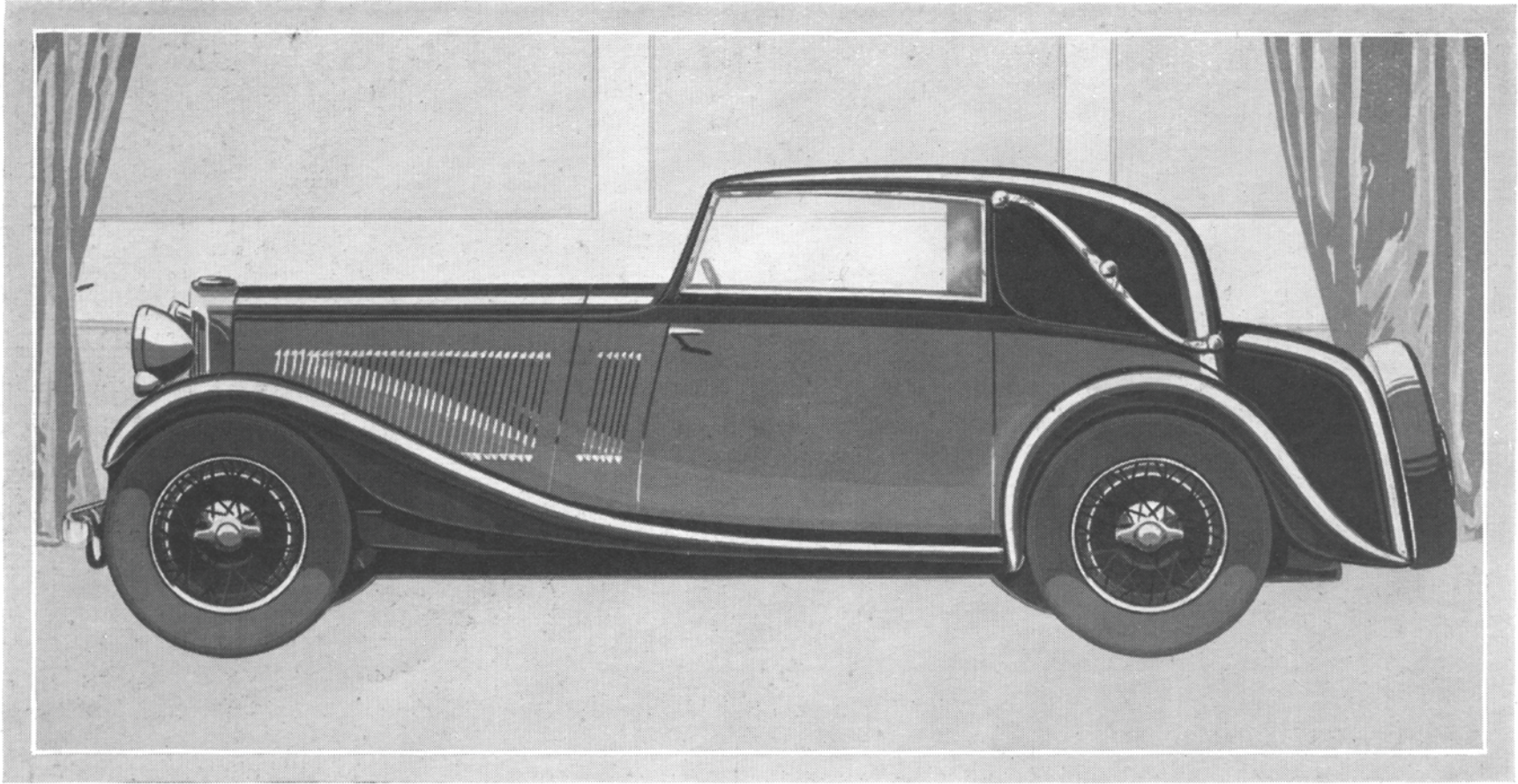
by

JAMES YOUNG & CO., LTD.,
BROMLEY

A COMMANDING MODEL OF SUPERB LINE, THIS TWO-WINDOW MODEL GIVES A SOMEWHAT MORE SPORTING APPEARANCE THAN THE FOUR-WINDOW TYPE.

THERE IS STILL AMPLE SEATING SPACE FOR FOUR PASSENGERS AND EXCELLENT LUGGAGE ROOM.

Price £795
Sliding Roof £10



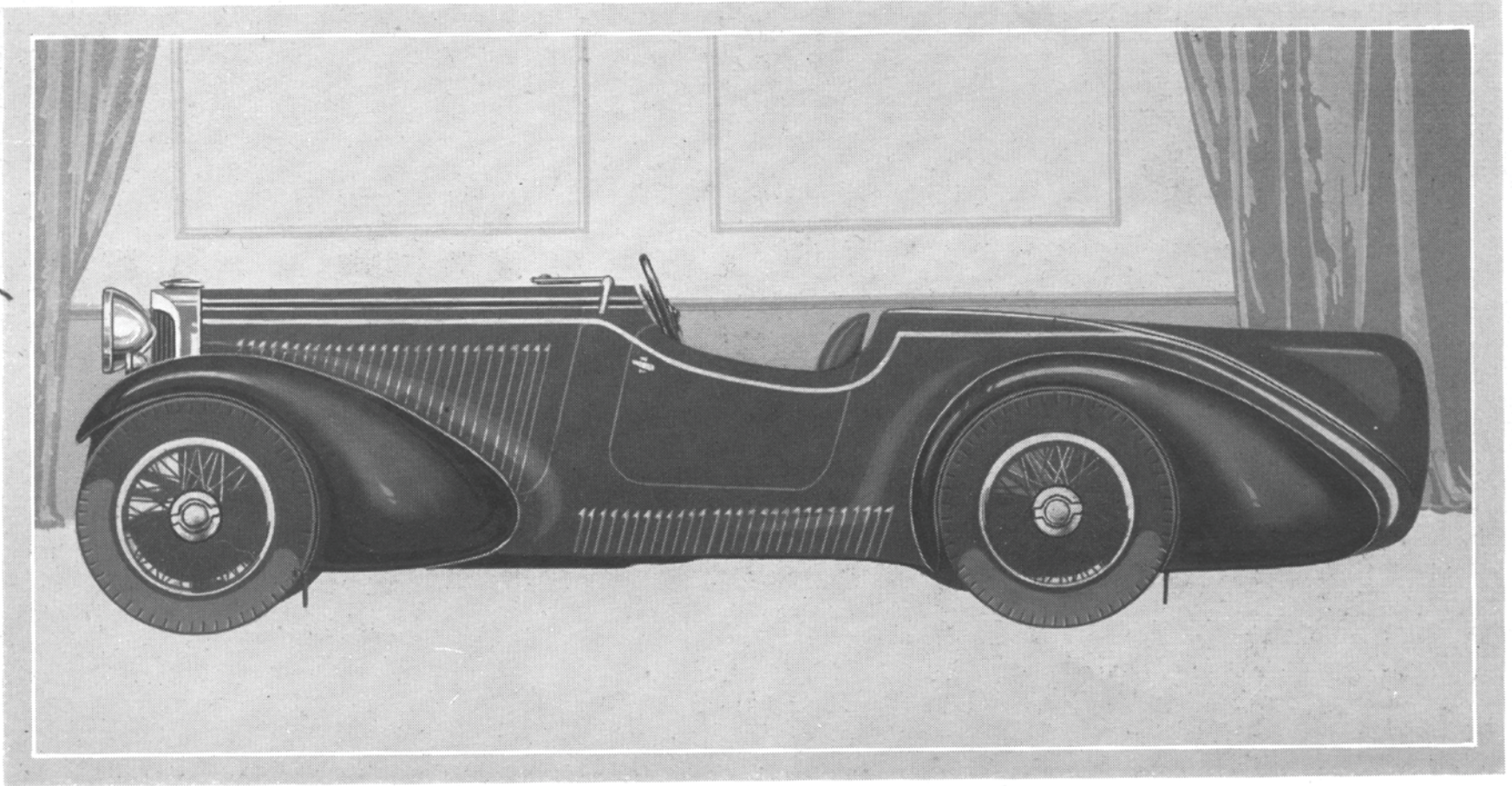
Model "105"
Drop-head Foursome Coupé

by

JAMES YOUNG & CO., LTD.,
BROMLEY

MANY MOTORISTS REQUIRE A CAR WHICH WILL OPEN AND CLOSE AT WILL, AND IN THIS MODEL THE RAISING AND LOWERING OF THE HOOD HAS BEEN DESIGNED TO BE CARRIED OUT WITH NEGLIGIBLE EFFORT. IF DESIRED, THE FRONT PORTION OF THE HOOD CAN BE ROLLED BACK WITHOUT DROPPING THE ENTIRE HEAD.

Price £795
Leather Hood £10



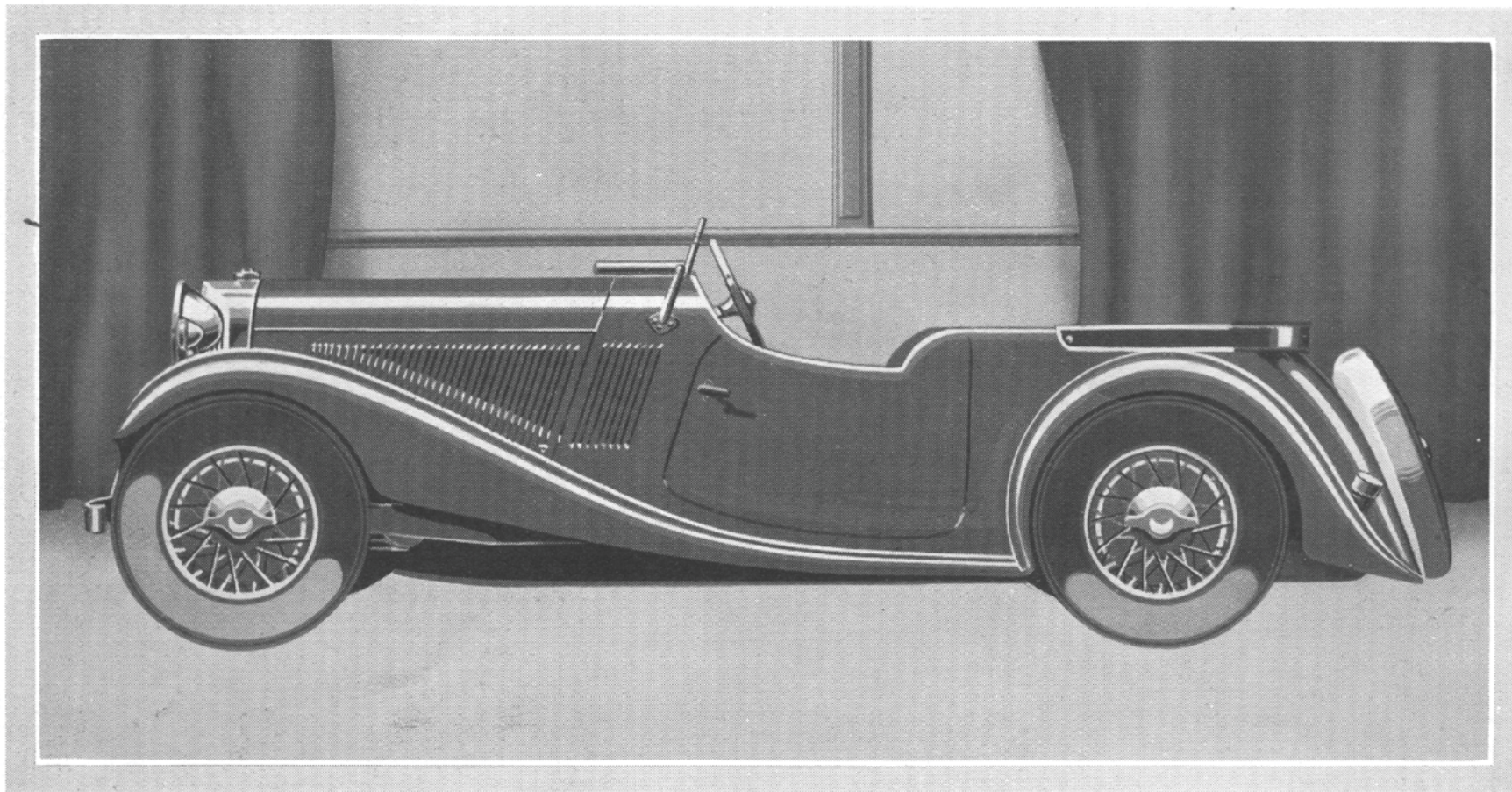
Model "105"
Special Sports 2-4 Seater

by

E. D. ABBOTT, LTD., FARNHAM

A UNIQUE MODEL FITTED WITH COACHWORK OF A TYPE THAT GAINED DISTINCTION AND A SPECIAL PRIZE AT A RECENT CONCOURS D'ELEGANCE. THIS CAR HAS THE ADVANTAGE OF EXCLUSIVENESS AND IS UNDOUBTEDLY ONE OF THE MOST HANDSOME MODELS ON THE ROAD.

Price £875



Model "105"
Sports Tourer
by
VANDEN PLAS

A MODEL THAT WILL APPEAL AT ONCE TO THE SPORTS MOTORIST BY REASON OF ITS BOLD YET GRACEFUL LINES. THE WEIGHT QUESTION HAS NOT BEEN FORGOTTEN, AND THE CAR IS UNDOUBTEDLY ONE OF THE FASTEST OF ITS TYPE ON THE ROAD TO-DAY. WITH A FULL COMPLEMENT OF PASSENGERS THERE IS STILL SPLENDID LUGGAGE SPACE IN THE REAR LOCKER.

Price £735

A STANDARD MODEL OF SIMILAR TYPE, BUT SOMEWHAT LESS ELABORATELY EQUIPPED, IS LISTED AT

£695

THE QUALITY AND WORKMANSHIP IN BOTH BODIES ARE, HOWEVER, IDENTICAL.

Talbot Records

From 1904 to 1933 Talbot cars have won so many trophies in national and international contests for speed, reliability, petrol and oil economy, elegance and comfort, that to publish the full list would take at least ten of these pages. The following is a selection of a few of the most notable records (from 1930, Talbot racing cars were entered by Messrs. Fox & Nicholl, Surbiton, Surrey) :—

1904. A Talbot won the Dewar Cup for World's Non-Stop Record (2,017 miles), also established a World's Non-Stop Record on a track in New York (2,058 miles). Three World's Records for speed won in France and Belgium.
1905. The 10 h.p. Talbot gained highest points in Australian Reliability Contest.
1906. World's Record won for petrol economy. In the Australian Reliability Trials three Talbots tied for first place. In an Indian test three Talbots gained full points. In the Paris-Monte Carlo Reliability Trials three Talbots won in their respective classes. Twenty first prizes in Home contests.
1907. Nine gold medals won in Australian contests. Talbot established a new record from Melbourne to Sydney. Twenty-nine first prizes in Home contests.
1908. For the first time the Australian Continent crossed from south to north in a motor car—a Talbot (2,000 miles of roadless country). Talbot first in Irish Reliability Trials; first, second and third in Australian Automobile Club contest. Over thirty first prizes in various Home contests.
1910. Record run, Sydney to Melbourne in 19 hrs. 47 mins.; first in New Zealand Reliability Trials; five first prizes in South African tests; fourteen British trophies won.
1912. Record run, Sydney to Brisbane.
1913. A 25 h.p. Talbot car, driven by Mr. Percy Lambert, achieved a speed on the Brooklands track of 103.84 miles in an hour, the first time in the world's history that man had travelled at that speed. Previously the 100 miles an hour record had been sought in vain by motors with engines three times the size of the Talbot's.

The car was all-British, including the tyres. The success was hailed by the Press as a credit "not only to the Talbot car but to British science and industry."

1914. Talbot cars won over forty first prizes in various competitions, including four highest awards in Transvaal (S. Africa).

NOTE.—Between 1914-1930, the Talbot did not compete in any events of the first importance.

1930. Irish International Grand Prix, Dublin: the three Talbots 1st, 2nd and 3rd in their class. R.A.C. Tourist Trophy Race, Ulster: the three Talbots 1st, 2nd and 3rd in their class. 500 Miles Race, Brooklands: the three Talbots 1st, 2nd and 3rd in their class.

1931. Double 12-Hours Race, Brooklands: the three Talbots 1st, 2nd and 3rd in their class. Alpine Trial: the "105" Talbot won a Coupe des Glaciers.

1932. British 1,000 Miles Race, Brooklands: a team of three "105" Talbots won Team Prize and were 1st, 2nd and 3rd in Class 4.

International Alpine Trial: team of three standard "105" Talbot Vanden Plas Tourers awarded the Coupe des Alpes, having completed the six days' trial without the loss of a mark. First British team to win the Alpine Cup for eighteen years and the first occasion that a British team completed the trial without the loss of a mark.

In this year the Talbot revived its pre-war policy of entering for "Elegance and Comfort" events, winning many notable successes with various models, including first prizes at Torquay, Ramsgate, Brooklands, Bangor, Eastbourne and in Scotland.

1933. Concours de Confort, Monte Carlo: the Talbot won first prize in its class and the Grand Prix d'Honneur.

Extra Accessories with Prices

The following extra accessories may be fitted to the various models at extra charge.

THE "65" STANDARD SALOON (£395)

	£	s.	d.
Luvax hand-controlled shock absorbers	10	10	0
"75" type headlamps	5	0	0
Chromium-plated head and side lamps	2	10	0
Chromium-plated headlamp bar	1	7	6
Cross stays to headlamp bar (black)	1	0	0
Cross stays to headlamp bar (chromium-plated)	1	7	6
Tandem attachment to windscreen wiper	1	1	0
Extra spare wheel and tyre (black wheel), fitted	13	2	0
Extra spare wheel and tyre (black wheel with coloured line on rim), fitted	13	4	6
Extra spare wheel and tyre (coloured wheel), fitted	13	12	0
Sunshine roof	7	10	0
Splintex or Acetex Safety glass all round	14	7	6
Bucket seats	4	0	0
Centre arm-rest to front seat	3	10	0
Tables in back of front seat	6	0	0
Exterior sun visor	4	0	0
Interior cloth-covered sun visors	1	10	0
1 pair rope-pulls	0	12	6
2 head cushions	1	2	6

THE "65" SPECIAL 4 AND 6 LIGHT SALOONS (£425)

Luvax hand-controlled shock absorbers	10	10	0
Chromium-plated head and side lamps	2	10	0
Tandem attachment to windscreen wiper	1	1	0
Extra spare wheel and tyre (black wheel), fitted	13	2	0
Extra spare wheel and tyre (black wheel with coloured line on rim), fitted	13	4	6
Extra spare wheel and tyre (coloured wheel), fitted	13	12	0

	£	s.	d.
Splintex or Acetex Safety glass all round—			
4-light	13	12	6
6-light	15	10	0
Exterior sun visor	4	0	0
Interior cloth-covered sun visors	1	10	0
Tables in back of front seat	6	0	0

THE "75" SPORTS SALOON (£495)

Luvax hand-controlled shock absorbers	10	10	0
Chromium-plated head and side lamps	2	10	0
Safebeam lamps	8	0	0
Tandem attachment to windscreen wiper	1	1	0
Revolution counter 3-inch dial	9	0	0
Revolution counter 6-inch dial	13	5	0
Extra spare wheel and tyre (black wheel), fitted	13	2	0
Extra spare wheel and tyre (black wheel with coloured line on rim), fitted	13	4	6
Extra spare wheel and tyre (coloured wheel), fitted	13	12	0
Sunshine roof	7	10	0
Splintex or Acetex Safety glass all round	10	5	0
Bench type front seat	7	10	0
Exterior sun visor	4	0	0
Interior cloth-covered sun visors	1	10	0
Glass louvres over doors (black frames)	3	15	0
Glass louvres over doors (chromium-plated frames)	4	15	0
"Quick-Lift" window winder	3	15	0

THE "75" COACHBUILT SALOON (£545)

Luvax hand-controlled shock absorbers	10	10	0
Chromium-plated head and side lamps	2	10	0
Safebeam lamps	8	0	0
Tandem attachment to windscreen wiper	1	1	0
Revolution counter 3-inch dial	9	0	0

Extra Accessories with Prices

	£	s.	d.
Revolution counter 6-inch dial	13	5	0
Extra spare wheel and tyre (black wheel), fitted	13	2	0
Extra spare wheel and tyre (black wheel with coloured line on rim), fitted	13	4	6
Extra spare wheel and tyre (coloured wheel), fitted	13	12	0
Splintex or Acetex Safety glass all round	14	5	0
2 head cushions	1	2	6

THE "95" SALOON (£645)

"105" type instrument board	11	18	0
Revolution counter 3-inch dial	9	0	0
Revolution counter 6-inch dial	13	5	0
Safebeam lamps	8	0	0
Extra spare wheel and tyre (black wheel), fitted	13	15	6
Extra spare wheel and tyre (black wheel with coloured line on rim), fitted	13	18	0
Extra spare wheel and tyre (coloured wheel), fitted	14	5	6
Splintex or Acetex Safety Plate glass in lieu of standard Safety Sheet glass	8	10	0
Chromium-plated head and side lamps...	1	11	6

THE "105" SALOON (£795)

Extra spare wheel and tyre (black wheel), fitted	13	2	0
Extra spare wheel and tyre (black wheel with coloured line on rim), fitted	13	4	6
Extra spare wheel and tyre (coloured wheel), fitted	13	12	0
Safebeam lamps	8	0	0

GENERAL LIST OF EXTRAS ON ALL MODELS

	£	s.	d.
Special colour—Body only	7	10	0
Special colour—Chassis, wings and roof	3	10	0
Special upholstery	7	10	0
"Ace" discs, 5 pairs (black), fitted	10	1	6
"Ace" discs, 5 pairs (black with coloured line), fitted	11	1	6
"Ace" discs, 5 pairs (chromium-plated)	18	9	6
"Ace" spare wheel cover (black with chromium-plated band), "65," "75" and "105"	3	10	0
"Ace" spare wheel cover (black with chromium-plated band), "95" model	4	10	0
Reversing position of clock and speedometer	0	12	6
Smith's thermometer on dashboard	2	5	0
Smith's oil pressure gauge on off-side of fascia board	4	7	6
D.W.S. permanent fourwheel jacking system	8	17	0
"Jackall" jacking system	12	12	0
Fitting jacking system (net)	3	3	0
"Rotax" fog lamp on dumb iron (chromium-plated)	2	15	0
"Homo" aluminium No. plates	1	1	0
Painting registration numbers	0	5	0
Partition with glass behind driver, sliding and non-sliding glass fixed	22	10	0
Partition with both glasses sliding	23	5	0
Partition with drop glasses	30	0	0

Terms of Business

All designs, weights, measurements, prices and quantities mentioned in our catalogue must be taken as approximate. Illustrations are given as a general guide, and are not binding in detail.

DEPOSIT.—Ten per cent. of the full amount to be deposited when the order is placed, the balance becoming payable on delivery of the car at our Works.

PAYMENT.—Cash on receipt of invoice with notification of the date when the car will be ready for delivery. If payment is not made within seven days of such notification, we reserve the right of selling the car.

We desire also to draw the attention of purchasers to the following Conditions of Sale, and also to the Guarantee:—

“The Company reserves the right to alter its catalogues and lists and the standard specifications stated therein, without any previous notice.

“The Company shall not be responsible for delay in delivery due to strikes, lock-outs, fire, accidents, combinations of workmen, delays in obtaining material, or other causes outside the control of the Company, and it may cancel any order, which it is unable to execute within two months of the due date owing to causes falling within this clause.

“The Company shall not by naming or accepting a date or time for delivery be deemed to have undertaken to give delivery on such date or within such time, but only to have undertaken to use its best endeavours to complete the order by such date or within such time. In case delivery shall not be made within six weeks of the due date as aforesaid, the Purchaser may thereupon, if he thinks fit, give the Company 14 days' notice to deliver, and failing delivery may cancel the order for the same, but shall have no claim against the Company for damages or compensation.

“All prices quoted in the Company's catalogues are for delivery at the Company's Works, and all orders for cars or chassis accepted by the Company shall be paid for in cash at its Registered Office, or to its authorised representative. Payment to be made on or before delivery. After delivery all cars and chassis shall be at the Purchaser's risk. If a car or chassis is ready for delivery and paid for, but delivery is postponed at the Purchaser's request, same shall be at the Purchaser's risk as from the day of payment.

“The Purchaser shall accept and pay for the car or chassis ordered by him when the same is ready for delivery.”

Guarantee

All Talbot Cars are sold without express or implied guarantee of their fitness or otherwise; but in case of breakage of any part within six months from date of sale, owing to defective material or workmanship, proved to our satisfaction, the defective part shall be repaired or a new one supplied, free of charge. The part to be returned to us, carriage paid, when claim is made. The six months is from the date of the sale by us, but if the car is sold by our Agent, and it has not been previously used, the period dates from the date of sale by our Agent. Tyres, electrical fittings and accessories, not being made by us, are sold without recourse against us under any circumstances.

The term “Agent” is used in a complimentary sense only, and those firms we style our Agents are not authorised to advertise, incur any debts or transact any business whatsoever on our account, nor are they authorised to give any warranty or make any representations on our behalf other than those contained in the above Guarantee.

BARLBY ROAD, LADBROKE GROVE, LONDON, W.10

CLEMENT TALBOT LTD.

CLEMENT TALBOT Ltd.

10-4-34

Revision of Prices and alterations to official Catalogue.

Special Coachwork by James Young & Co.

"105" 4 door Saloon	page 31	£825
"105" Sports Foursome	page 32	£825
"105" Fixed - head Foursome Coupe	page 33	£825
"105" Drop - head " "	page 34	£825
Sliding roof & hood £10 extra in each case as per Catalogue		
"75" Coachbuilt Saloon (list price £545)		
2 head cushions now standard equipment.		